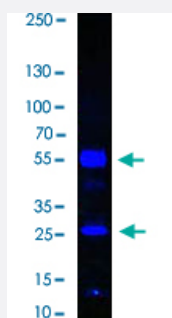


Goat Fab Anti-Human IgG (H&L) secondary antibody (FITC)

Catalog # PAB31779

Size 1 mg

Applications



Western Blot

Western Blot analysis human IgG. Load: 50 ng per lane. Primary antibody: None. Secondary antibody: Fluorescein goat secondary antibody at 1:1000 for 60 min at RT. Blocking: for 30 min at RT. Predicted/Observed size: 25 & 55 kDa, 25 & 55 kDa for human IgG.

Specification

Product Description	Goat Fab polyclonal antibody raised against human IgG (H&L). The antibody is conjugated with Fluorescein (FITC).
Immunogen	Human IgG whole molecule.
Host	Goat
Reactivity	Human
Specificity	IgG (H&L). Assay by immunoelectrophoresis resulted in a single precipitin arc against anti-fluorescein and anti-goat serum. No reaction was observed against anti-papain or anti-goat IgG F(c).
Form	Lyophilized
Conjugation	FITC
Purification	This antibody was prepared from monospecific antiserum by immunoaffinity chromatography using human IgG coupled to agarose beads followed by solid phase adsorption(s) to remove any unwanted reactivities, papain digestion and chromatographic separation.
Isotype	IgG Fab
Conjugation Note	FP Value: 3.49 moles Fluorescein (FITC) per mole of IgG Fab.

Recommend Usage	FLISA (1:10000-1:50000) Flow Cytometry (1:500-1:2500) Immunofluorescence (1:1000-1:5000) The optimal working dilution should be determined by the end user.
Storage Buffer	Lyophilized from 0.02 M potassium phosphate, 0.15 M sodium chloride, pH 7.2 (10 mg/mL BSA (immunoglobulin and protease free), 0.01% (w/v) sodium azide).
Storage Instruction	Store vial at 4°C prior to restoration. After reconstitution with 1.0 mL deionized water (or equivalent), aliquot contents and freeze at -20°C or below for extended storage. Aliquot to avoid repeated freezing and thawing. Centrifuge product if not completely clear after standing at room temperature. This product is stable for several weeks at 4°C as an undiluted liquid. Dilute only prior to immediate use.
Note	This product contains sodium azide: a POISONOUS AND HAZARDOUS SUBSTANCE which should be handled by trained staff only.

Applications

- Western Blot

Western Blot analysis human IgG. Load: 50 ng per lane. Primary antibody: None. Secondary antibody: Fluorescein goat secondary antibody at 1:1000 for 60 min at RT. Blocking: for 30 min at RT. Predicted/Observed size: 25 & 55 kDa, 25 & 55 kDa for human IgG.

- Immunofluorescence

- Flow Cytometry

- Fluorescence-linked Immunosorbent Assay