

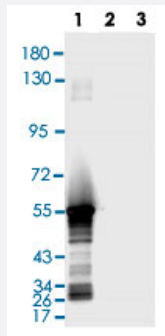
SARS-CoV-2

SARS-CoV-2 N polyclonal antibody

Catalog # PAB31771

Size 100 ug

Applications



Western Blot

Western blot analysis of Lane 1: N (SARS-CoV-2) Recombinant Protein (Cat # P6660), Lane 2: S1 (SARS-CoV-2) RBD Recombinant Protein (Cat # P6661), Lane 3: S (SARS-CoV-2) ECD Recombinant Protein (Cat # P6662) with SARS-CoV-2 N polyclonal antibody (1:500) and Goat Anti-Rabbit IgG (H&L) secondary antibody (HRP) (1:20000).

ELISA experiment

	1	
A	2.712	. 1:100
B	2.703	. 1:200
C	2.227	. 1:500
D	1.98	. 1:1000
E	0.874	. 1:5000
F	0.727	. 1:10000
G	0.563	. 1:20000
H	0.21	Blank control

Enzyme-linked Immunoabsorbent Assay

ELISA analysis was coated by N (SARS-CoV-2) Recombinant Protein (Cat # P6660), 100 uL/well at 2 ug/mL, was performed by loading SARS-CoV-2 N polyclonal antibody at various concentrations and Goat Anti-Rabbit IgG (H&L) secondary antibody (HRP) (1:10000).

Specification

Product Description	Rabbit polyclonal antibody raised against partial recombinant of SARS-CoV-2 N.
Immunogen	Recombinant protein corresponding to full length SARS-CoV-2.
Host	Rabbit
Reactivity	SARS-CoV-2
Specificity	The antibody detects endogenous levels of SARS-CoV-2 N.
Form	Liquid

Purification	Affinity purification
Purity	> 95% by SDS-PAGE
Isotype	IgG
Recommend Usage	ELISA Western Blot (1:500) The optimal working dilution should be determined by the end user.
Storage Buffer	In PBS, pH 7.2 (0.02% sodium azide).
Storage Instruction	Store at 4°C for short term. For long term storage store at -20°C. Aliquot to avoid repeated freezing and thawing.
Note	This product contains sodium azide: a POISONOUS AND HAZARDOUS SUBSTANCE which should be handled by trained staff only.

Applications

- Western Blot

Western blot analysis of Lane 1: N (SARS-CoV-2) Recombinant Protein (Cat # P6660), Lane 2: S1 (SARS-CoV-2) RBD Recombinant Protein (Cat # P6661), Lane 3: S (SARS-CoV-2) ECD Recombinant Protein (Cat # P6662) with SARS-CoV-2 N polyclonal antibody (1:500) and Goat Anti-Rabbit IgG (H&L) secondary antibody (HRP) (1:20000).

- Enzyme-linked Immunoabsorbent Assay

ELISA analysis was coated by N (SARS-CoV-2) Recombinant Protein (Cat # P6660), 100 uL/well at 2 ug/mL, was performed by loading SARS-CoV-2 N polyclonal antibody at various concentrations and Goat Anti-Rabbit IgG (H&L) secondary antibody (HRP) (1:10000).