

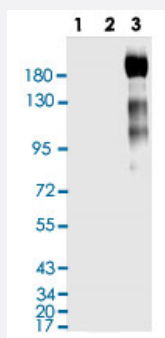
SARS-CoV-2

SARS-CoV-2 S polyclonal antibody

Catalog # PAB31765

Size 100 ug

Applications



Western Blot

Western blot analysis of Lane 1: N (SARS-CoV-2) Recombinant Protein (Cat # P6660), Lane 2: S1 (SARS-CoV-2) RBD Recombinant Protein (Cat # P6661), Lane 3: S (SARS-CoV-2) ECD Recombinant Protein (Cat # P6662) with SARS-CoV-2 S polyclonal antibody (1:500) and Goat Anti-Rabbit IgG (H&L) secondary antibody (HRP) (1:20000).

Enzyme-linked Immunoabsorbent Assay

ELISA analysis was coated by Lane 1: S (SARS-CoV-2) ECD Recombinant Protein (Cat # P6662), Lane 2: S1 (SARS-CoV-2) RBD Recombinant Protein (Cat # P6661), 100 uL/well at 2 ug/mL, was performed by loading SARS-CoV-2 S polyclonal antibody at various concentrations and Goat Anti-Rabbit IgG (H&L) secondary antibody (HRP) (1:10000).

ELISA experiment

	1	2	
A	0.926	0.151	1:1000
B	0.305	0.134	1:10000
C	0.204	0.119	1:20000
D	0.164	0.127	1:40000
E	0.134	0.114	1:80000
F	0.143	0.123	1:160000
G	0.135	0.111	1:320000
H	0.128	0.103	Blank control

Specification

Product Description	Rabbit polyclonal antibody raised against partial synthetic peptide of SARS-CoV-2 S.
Immunogen	A synthetic peptide corresponding to amino acids 51-100 of SARS-CoV-2 S.
Host	Rabbit
Reactivity	SARS-CoV-2
Specificity	The antibody detects endogenous levels of SARS-CoV-2 S.
Form	Liquid

Purification	Affinity purification
Purity	> 95% by SDS-PAGE
Isotype	IgG
Recommend Usage	ELISA Western Blot (1:500) The optimal working dilution should be determined by the end user.
Storage Buffer	In PBS, pH 7.2 (0.02% sodium azide).
Storage Instruction	Store at 4°C for short term. For long term storage store at -20°C. Aliquot to avoid repeated freezing and thawing.
Note	This product contains sodium azide: a POISONOUS AND HAZARDOUS SUBSTANCE which should be handled by trained staff only.

Applications

- Western Blot

Western blot analysis of Lane 1: N (SARS-CoV-2) Recombinant Protein (Cat # P6660), Lane 2: S1 (SARS-CoV-2) RBD Recombinant Protein (Cat # P6661), Lane 3: S (SARS-CoV-2) ECD Recombinant Protein (Cat # P6662) with SARS-CoV-2 S polyclonal antibody (1:500) and Goat Anti-Rabbit IgG (H&L) secondary antibody (HRP) (1:20000).

- Enzyme-linked Immunoabsorbent Assay

ELISA analysis was coated by Lane 1: S (SARS-CoV-2) ECD Recombinant Protein (Cat # P6662), Lane 2: S1 (SARS-CoV-2) RBD Recombinant Protein (Cat # P6661), 100 uL/well at 2 ug/mL, was performed by loading SARS-CoV-2 S polyclonal antibody at various concentrations and Goat Anti-Rabbit IgG (H&L) secondary antibody (HRP) (1:10000).