

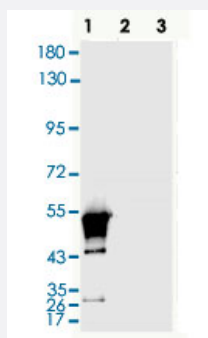
## SARS-CoV-2

# SARS-CoV-2 N polyclonal antibody

Catalog # PAB31750

Size 100 ug

## Applications



### Western Blot

Western blot analysis of Lane 1: N (SARS-CoV-2) Recombinant Protein (Cat # P6660), Lane 2: S1 (SARS-CoV-2) RBD Recombinant Protein (Cat # P6661), Lane 3: S (SARS-CoV-2) ECD Recombinant Protein (Cat # P6662) with SARS-CoV-2 N polyclonal antibody (1:500) and Goat Anti-Rabbit IgG (H&L) secondary antibody (HRP) (1:20000).

### ELISA experiment

	1	
A	2.133	1:100
B	2.103	1:200
C	1.445	1:500
D	1.037	1:1000
E	0.494	1:5000
F	0.52	1:10000
G	0.469	1:20000
H	0.167	Blank control

### Enzyme-linked Immunoabsorbent Assay

ELISA analysis was coated by N (SARS-CoV-2) Recombinant Protein (Cat # P6660), 100 uL/well at 2 ug/mL, was performed by loading SARS-CoV-2 N polyclonal antibody at various concentrations and Goat Anti-Rabbit IgG (H&L) secondary antibody (HRP) (1:10000).

## Specification

Product Description	Rabbit polyclonal antibody raised against partial synthetic peptide of SARS-CoV-2 N.
Immunogen	A synthetic peptide corresponding to amino acids 1-50 of SARS-CoV-2 N.
Host	Rabbit
Reactivity	SARS-CoV-2
Specificity	The antibody detects endogenous levels of SARS-CoV-2 N.
Form	Liquid

<b>Purification</b>	Affinity purification
<b>Purity</b>	> 95% by SDS-PAGE
<b>Isotype</b>	IgG
<b>Recommend Usage</b>	ELISA Western Blot (1:500) The optimal working dilution should be determined by the end user.
<b>Storage Buffer</b>	In PBS, pH 7.2 (0.02% sodium azide).
<b>Storage Instruction</b>	Store at 4°C for short term. For long term storage store at -20°C. Aliquot to avoid repeated freezing and thawing.
<b>Note</b>	This product contains sodium azide: a POISONOUS AND HAZARDOUS SUBSTANCE which should be handled by trained staff only.

## Applications

- Western Blot

Western blot analysis of Lane 1: N (SARS-CoV-2) Recombinant Protein (Cat # P6660), Lane 2: S1 (SARS-CoV-2) RBD Recombinant Protein (Cat # P6661), Lane 3: S (SARS-CoV-2) ECD Recombinant Protein (Cat # P6662) with SARS-CoV-2 N polyclonal antibody (1:500) and Goat Anti-Rabbit IgG (H&L) secondary antibody (HRP) (1:20000).

- Enzyme-linked Immunoabsorbent Assay

ELISA analysis was coated by N (SARS-CoV-2) Recombinant Protein (Cat # P6660), 100 uL/well at 2 ug/mL, was performed by loading SARS-CoV-2 N polyclonal antibody at various concentrations and Goat Anti-Rabbit IgG (H&L) secondary antibody (HRP) (1:10000).