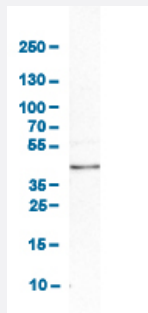


PPID polyclonal antibody

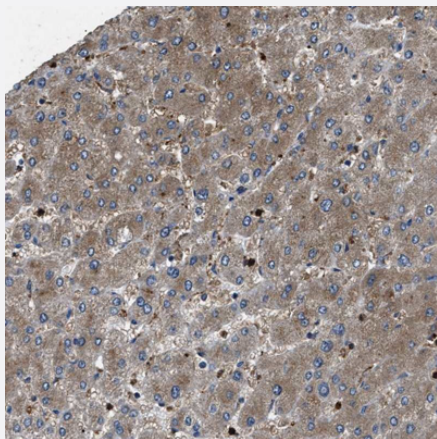
Catalog # PAB31676 Size 100 uL

Applications



Western Blot (Cell lysate)

Western Blot analysis of human cell line HDLM-2.



Immunohistochemistry (Formalin/PFA-fixed paraffin-embedded sections)

Immunohistochemical staining (Formalin-fixed paraffin-embedded sections) of human liver shows moderate cytoplasmic positivity in hepatocytes.

Specification

Product Description	Rabbit polyclonal antibody raised against partial recombinant human PPID.
Immunogen	Recombinant protein corresponding to amino acids 133-207 of human PPID.
Sequence	FITVPTPHLDGKHVVFGQVIKIGIGVARILENVEVKGEKPAKLCVIAECGELKEGDDGGIFPKDGS DSHPDFPE
Host	Rabbit
Reactivity	Human

Form	Liquid
Purification	Antigen affinity purification
Isotype	IgG
Recommend Usage	Immunohistochemistry (Formalin/PFA-fixed paraffin-embedded sections) (1:20-1:50) Western Blot (0.4 ug/mL) The optimal working dilution should be determined by the end user.
Storage Buffer	In PBS, pH 7.2 (40% glycerol, 0.02% sodium azide).
Storage Instruction	Store at 4°C for short term storage. For long term storage store at -20°C. Aliquot to avoid repeated freezing and thawing.
Note	This product contains sodium azide: a POISONOUS AND HAZARDOUS SUBSTANCE which should be handled by trained staff only.

Applications

- Western Blot (Cell lysate)

Western Blot analysis of human cell line HDLM-2.

- Immunohistochemistry (Formalin/PFA-fixed paraffin-embedded sections)

Immunohistochemical staining (Formalin-fixed paraffin-embedded sections) of human liver shows moderate cytoplasmic positivity in hepatocytes.

Gene Info — PPID

Entrez GeneID	5481
Protein Accession#	Q08752
Gene Name	PPID
Gene Alias	CYP-40, CYPD, MGC33096
Gene Description	peptidylprolyl isomerase D
Omim ID	601753
Gene Ontology	Hyperlink

Gene Summary

The protein encoded by this gene is a member of the peptidyl-prolyl cis-trans isomerase (PPIase) family. PPIases catalyze the cis-trans isomerization of proline imidic peptide bonds in oligopeptides and accelerate the folding of proteins. This protein has been shown to possess PPIase activity and, similar to other family members, can bind to the immunosuppressant cyclosporin A. [provided by RefSeq]

Other Designations

40 kDa peptidyl-prolyl cis-trans isomerase D|PPIase|cyclophilin 40|cyclophilin D|cyclophilin-related protein|rotamase

Pathway

- [Calcium signaling pathway](#)