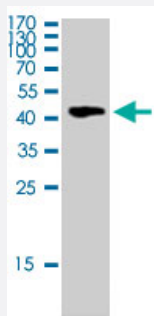


CDK9 (phospho T186) polyclonal antibody

Catalog # PAB31673 Size 100 uL

Applications



Western Blot (Cell lysate)

Western Blot (Cell lysate) analysis of 3T3 cell lysate.

Specification

Product Description	Rabbit polyclonal antibody raised against synthetic peptide of human CDK9 (phospho T186).
Immunogen	A synthetic peptide corresponding to amino acids 130-210 of human CDK9 (phospho T186).
Host	Rabbit
Reactivity	Human, Mouse, Rat
Specificity	This antibody detects endogenous levels of Cdk9 protein only when phosphorylated at T186.
Form	Liquid
Purification	Affinity purification
Isotype	IgG
Recommend Usage	ELISA (1:5000) Western Blot (1:500-2000) The optimal working dilution should be determined by the end user.
Storage Buffer	In PBS (50% glycerol, 0.5% BSA and 0.02% sodium azide).

Storage Instruction

Store at -20°C.
Aliquot to avoid repeated freezing and thawing.

Note

This product contains sodium azide: a POISONOUS AND HAZARDOUS SUBSTANCE which should be handled by trained staff only.

Applications

- Western Blot (Cell lysate)

Western Blot (Cell lysate) analysis of 3T3 cell lysate.

- Enzyme-linked Immunoabsorbent Assay

Gene Info — CDK9

Entrez GeneID[1025](#)**Protein Accession#**[P50750](#)**Gene Name**

CDK9

Gene Alias

C-2k, CDC2L4, CTK1, PITALRE, TAK

Gene Description

cyclin-dependent kinase 9

Omim ID[603251](#)**Gene Ontology**[Hyperlink](#)**Gene Summary**

The protein encoded by this gene is a member of the cyclin-dependent protein kinase (CDK) family. CDK family members are highly similar to the gene products of *S. cerevisiae* cdc28, and *S. pombe* cdc2, and known as important cell cycle regulators. This kinase was found to be a component of the multiprotein complex TAK/P-TEFb, which is an elongation factor for RNA polymerase II-directed transcription and functions by phosphorylating the C-terminal domain of the largest subunit of RNA polymerase II. This protein forms a complex with and is regulated by its regulatory subunit cyclin T or cyclin K. HIV-1 Tat protein was found to interact with this protein and cyclin T, which suggested a possible involvement of this protein in AIDS. [provided by RefSeq]

Other Designations

CDC2-related kinase|OTTHUMP00000022198|cell division protein kinase 9|serine/threonine protein kinase PITALRE