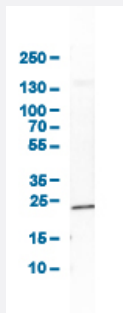


TAGLN polyclonal antibody

Catalog # PAB31628

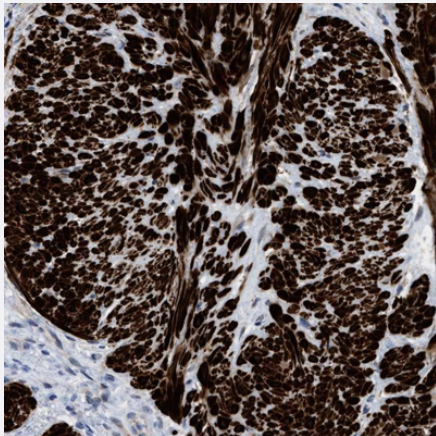
Size 100 uL

Applications



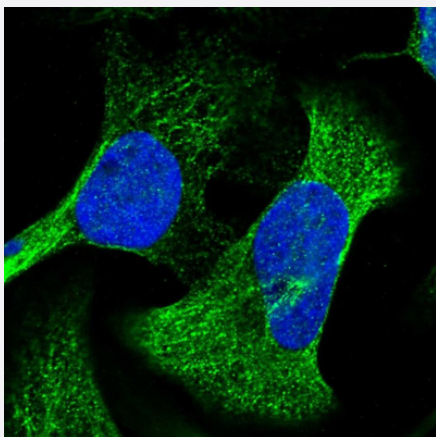
Western Blot (Tissue lysate)

Western Blot analysis of human heart tissue.



Immunohistochemistry (Formalin/PFA-fixed paraffin-embedded sections)

Immunohistochemical staining (Formalin-fixed paraffin-embedded sections) of human gallbladder shows strong cytoplasmic positivity in smooth muscle cells.



Immunofluorescence

Immunofluorescent staining of human cell line U-2 OS shows localization to mitochondria & microtubules. Antibody staining is shown in green.

Specification

Product Description	Rabbit polyclonal antibody raised against partial recombinant human TAGLN.
Immunogen	Recombinant protein corresponding to amino acids 19-94 of human TAGLN.
Sequence	EKKYDEELEERLVEWIVQCGPDVGRPDGRGLGFQVWLKNGVILSKLVNSLYPDGSKPVKVPEN PPSMVFKQMEQV
Host	Rabbit
Reactivity	Human
Form	Liquid
Purification	Antigen affinity purification
Isotype	IgG
Recommend Usage	Immunofluorescence (1-4 ug/mL) Immunohistochemistry (Formalin/PFA-fixed paraffin-embedded sections) (1:200-1:500) Western Blot (0.4 ug/mL) The optimal working dilution should be determined by the end user.
Storage Buffer	In PBS, pH 7.2 (40% glycerol, 0.02% sodium azide).
Storage Instruction	Store at 4°C for short term storage. For long term storage store at -20°C. Aliquot to avoid repeated freezing and thawing.
Note	This product contains sodium azide: a POISONOUS AND HAZARDOUS SUBSTANCE which should be handled by trained staff only.

Applications

- Western Blot (Tissue lysate)

Western Blot analysis of human heart tissue.

- Immunohistochemistry (Formalin/PFA-fixed paraffin-embedded sections)

Immunohistochemical staining (Formalin-fixed paraffin-embedded sections) of human gallbladder shows strong cytoplasmic positivity in smooth muscle cells.

- Immunofluorescence

Immunofluorescent staining of human cell line U-2 OS shows localization to mitochondria & microtubules. Antibody staining is shown in green.

Gene Info — TAGLN

Entrez GeneID	6876
Protein Accession#	Q01995
Gene Name	TAGLN
Gene Alias	DKFZp686P11128, SM22, SMCC, TAGLN1, WS3-10
Gene Description	transgelin
Omim ID	600818
Gene Ontology	Hyperlink
Gene Summary	The protein encoded by this gene is a transformation and shape-change sensitive actin cross-linking/gelling protein found in fibroblasts and smooth muscle. Its expression is down-regulated in many cell lines, and this down-regulation may be an early and sensitive marker for the onset of transformation. A functional role of this protein is unclear. Two transcript variants encoding the same protein have been found for this gene. [provided by RefSeq]
Other Designations	SM22-alpha transgelin variant 2

Publication Reference

- [Stromal contribution to the colorectal cancer transcriptome.](#)

Isella C, Terrasi A, Bellomo SE, Petti C, Galatola G, Muratore A, Mellano A, Senetta R, Cassenti A, Sonetto C, Inghirami G, Trusolino L, Fekete Z, De Ridder M, Cassoni P, Storme G, Bertotti A, Medico E.

Nature Genetics 2015 Apr; 47(4):312.

Application: IHC-P, Human, Human colorectal cancer

Disease

- [Cardiovascular Diseases](#)
- [Diabetes Mellitus](#)
- [Edema](#)
- [Genetic Predisposition to Disease](#)
- [Prostatic Neoplasms](#)

- [Tobacco Use Disorder](#)