

# ARL6 polyclonal antibody

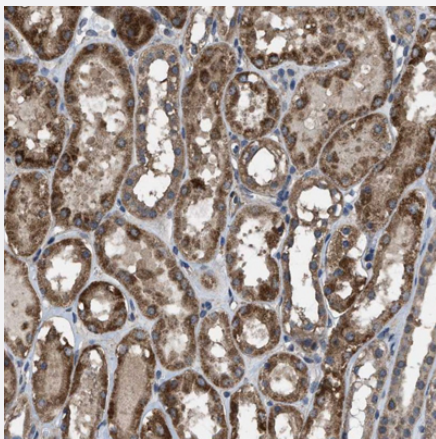
Catalog # PAB31626      Size 100 uL

## Applications



### Western Blot (Transfected lysate)

Western Blot analysis of (1) Negative control (vector only transfected HEK293T lysate), and (2) Over-expression lysate (Co-expressed with a C-terminal myc-DDK tag (~3.1 kDa) in mammalian HEK293T cells).



### Immunohistochemistry (Formalin/PFA-fixed paraffin-embedded sections)

Immunohistochemical staining (Formalin-fixed paraffin-embedded sections) of human kidney shows strong cytoplasmic positivity in tubuli.

## Specification

<b>Product Description</b>	Rabbit polyclonal antibody raised against partial recombinant human ARL6.
<b>Immunogen</b>	Recombinant protein corresponding to amino acids 92-184 of human ARL6.
<b>Sequence</b>	FVIDSSDRLRMVVAKEELDTLLNHPDIKHRRIPILFFANKMDLRDAVTSVKVSQLLCLENIKDKPWHI CASDAIKGEGQLQEGVDWLQDQIQTV
<b>Host</b>	Rabbit
<b>Reactivity</b>	Human

Form	Liquid
Purification	Antigen affinity purification
Isotype	IgG
Recommend Usage	Immunohistochemistry (Formalin/PFA-fixed paraffin-embedded sections) (1:50-1:200) Western Blot (0.4 ug/mL) The optimal working dilution should be determined by the end user.
Storage Buffer	In PBS, pH 7.2 (40% glycerol, 0.02% sodium azide).
Storage Instruction	Store at 4°C for short term storage. For long term storage store at -20°C. Aliquot to avoid repeated freezing and thawing.
Note	This product contains sodium azide: a POISONOUS AND HAZARDOUS SUBSTANCE which should be handled by trained staff only.

## Applications

- Western Blot (Transfected lysate)

Western Blot analysis of (1) Negative control (vector only transfected HEK293T lysate), and (2) Over-expression lysate (Co-expressed with a C-terminal myc-DDK tag (~3.1 kDa) in mammalian HEK293T cells).

- Immunohistochemistry (Formalin/PFA-fixed paraffin-embedded sections)

Immunohistochemical staining (Formalin-fixed paraffin-embedded sections) of human kidney shows strong cytoplasmic positivity in tubuli.

## Gene Info — ARL6

Entrez GeneID	<a href="#">84100</a>
Protein Accession#	<a href="#">Q9H0F7</a>
Gene Name	ARL6
Gene Alias	BBS3, MGC32934
Gene Description	ADP-ribosylation factor-like 6
Omim ID	<a href="#">209900 608845</a>
Gene Ontology	<a href="#">Hyperlink</a>

**Gene Summary**

The protein encoded by this gene belongs to the ARF family of GTP-binding proteins. ARF proteins are important regulators of cellular traffic and are the founding members of an expanding family of homologous proteins and genomic sequences. They depart from other small GTP-binding proteins by a unique structural device that implements front-back communication from the N-terminus to the nucleotide-binding site. Studies of the mouse ortholog of this protein suggest an involvement in protein transport, membrane trafficking, or cell signaling during hematopoietic maturation. Alternative splicing occurs at this locus and two transcript variants encoding the same protein have been described. [provided by RefSeq]

**Other Designations**

-

**Disease**

- [Cardiovascular Diseases](#)
- [Diabetes Mellitus](#)
- [Edema](#)
- [Obesity](#)
- [Retinal Diseases](#)