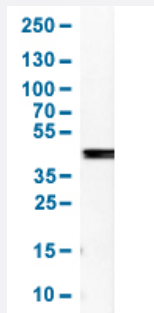


SERPINB5 polyclonal antibody

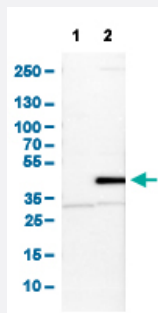
Catalog # PAB31620 Size 100 uL

Applications



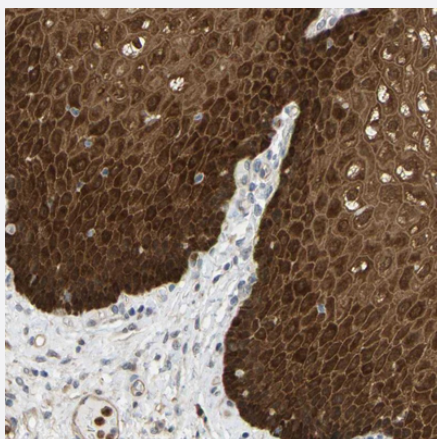
Western Blot (Tissue lysate)

Western Blot analysis of human esophagus tissue.



Western Blot (Cell lysate)

Western Blot analysis of (1) NIH-3T3 cell lysate (Mouse embryonic fibroblast cells), and (2) NBT-II cell lysate (Rat Wistar bladder tumour cells).



Immunohistochemistry (Formalin/PFA-fixed paraffin-embedded sections)

Immunohistochemical staining (Formalin-fixed paraffin-embedded sections) of human esophagus shows strong cytoplasmic positivity in squamous epithelial cells.

Specification

Product Description	Rabbit polyclonal antibody raised against partial recombinant human SERPINB5.
Immunogen	Recombinant protein corresponding to amino acids 203-285 of human SERPINB5.
Sequence	TFCMGNIDSINCKIIELPFQNKHLSMFILLPKDVEDESTGLEKIEKQLNSESLSQWTNPSTMANAKV KLSIPKFKVEKMIDPK
Host	Rabbit
Reactivity	Human, Rat
Form	Liquid
Purification	Antigen affinity purification
Isotype	IgG
Recommend Usage	Immunohistochemistry (Formalin/PFA-fixed paraffin-embedded sections) (1:200-1:500) Western Blot (1:100-1:250) The optimal working dilution should be determined by the end user.
Storage Buffer	In PBS, pH 7.2 (40% glycerol, 0.02% sodium azide).
Storage Instruction	Store at 4°C for short term storage. For long term storage store at -20°C. Aliquot to avoid repeated freezing and thawing.
Note	This product contains sodium azide: a POISONOUS AND HAZARDOUS SUBSTANCE which should be handled by trained staff only.

Applications

- Western Blot (Tissue lysate)

Western Blot analysis of human esophagus tissue.

- Western Blot (Cell lysate)

Western Blot analysis of (1) NIH-3T3 cell lysate (Mouse embryonic fibroblast cells), and (2) NBT-II cell lysate (Rat Wistar bladder tumour cells).

- Immunohistochemistry (Formalin/PFA-fixed paraffin-embedded sections)

Immunohistochemical staining (Formalin-fixed paraffin-embedded sections) of human esophagus shows strong cytoplasmic positivity in squamous epithelial cells.

Gene Info — SERPINB5

Entrez GeneID

[5268](#)

Protein Accession#	P36952
Gene Name	SERPINB5
Gene Alias	PI5, maspin
Gene Description	serpin peptidase inhibitor, clade B (ovalbumin), member 5
Omim ID	154790
Gene Ontology	Hyperlink
Gene Summary	clade B (ovalbumin)
Other Designations	protease inhibitor 5 (maspin) serine (or cysteine) proteinase inhibitor, clade B (ovalbumin), member 5

Publication Reference

- [EGFR Signaling Regulates Maspin/SerpinB5 Phosphorylation and Nuclear Localization in Mammary Epithelial Cells.](#)

Tamazato Longhi M, Magalhaes M, Reina J, Morais Freitas V, Cella N.

PLoS One 2016 Jul; 11(7):e0159856.

Application: IF, IHC-P, WB-Ce, WB-Ti, WB-Re, Human Mouse, MCF-10A cells, Mouse inguinal glands, Mouse mammary glands, Recombinant proteins

Pathway

- [p53 signaling pathway](#)