

METAP2 polyclonal antibody

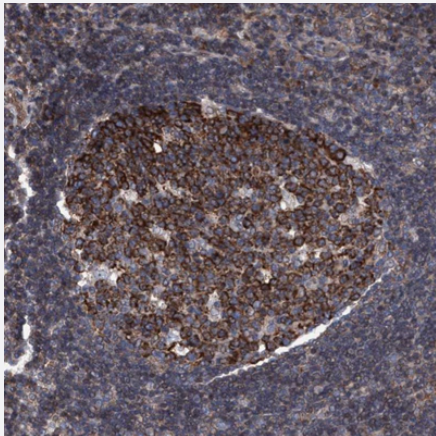
Catalog # PAB31616 Size 100 uL

Applications



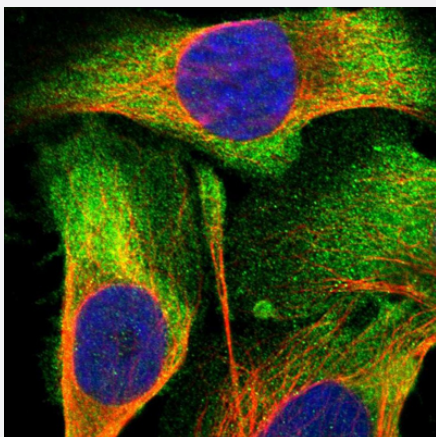
Western Blot (Cell lysate)

Western Blot analysis of (1) human cell line RT-4, and (2) human cell line U-251MG sp.



Immunohistochemistry (Formalin/PFA-fixed paraffin-embedded sections)

Immunohistochemical staining (Formalin-fixed paraffin-embedded sections) of human lymph node shows strong cytoplasmic positivity in germinal center cells.



Immunofluorescence

Immunofluorescent staining of human cell line U-2 OS shows localization to plasma membrane & cytosol. Antibody staining is shown in green.

Specification

Product Description	Rabbit polyclonal antibody raised against partial recombinant human METAP2.
Immunogen	Recombinant protein corresponding to amino acids 10-101 of human METAP2.
Sequence	SGSHLNGDLDPDDREEGAASTAEAAKKRRKKKKSKGPSAAGEQEPDKESGASVDEVARQL ERSALEDKERDEDEDGDGDGDGATGKKKK
Host	Rabbit
Reactivity	Human
Form	Liquid
Purification	Antigen affinity purification
Isotype	IgG
Recommend Usage	Immunofluorescence (1-4 ug/mL) Immunohistochemistry (Formalin/PFA-fixed paraffin-embedded sections) (1:1000-1:2500) Western Blot (1:100-1:250) The optimal working dilution should be determined by the end user.
Storage Buffer	In PBS, pH 7.2 (40% glycerol, 0.02% sodium azide).
Storage Instruction	Store at 4°C for short term storage. For long term storage store at -20°C. Aliquot to avoid repeated freezing and thawing.
Note	This product contains sodium azide: a POISONOUS AND HAZARDOUS SUBSTANCE which should be handled by trained staff only.

Applications

- Western Blot (Cell lysate)

Western Blot analysis of (1) human cell line RT-4, and (2) human cell line U-251MG sp.

- Immunohistochemistry (Formalin/PFA-fixed paraffin-embedded sections)

Immunohistochemical staining (Formalin-fixed paraffin-embedded sections) of human lymph node shows strong cytoplasmic positivity in germinal center cells.

- Immunofluorescence

Immunofluorescent staining of human cell line U-2 OS shows localization to plasma membrane & cytosol. Antibody staining is shown in green.

Gene Info — METAP2

Entrez GeneID [10988](#)**Protein Accession#** [P50579](#)**Gene Name** METAP2**Gene Alias** MAP2, MNPEP, p67, p67eIF2**Gene Description** methionyl aminopeptidase 2**Omim ID** [601870](#)**Gene Ontology** [Hyperlink](#)

Gene Summary This gene is a member of the methionyl aminopeptidase family and encodes a protein that binds 2 cobalt or manganese ions. This protein functions both by protecting the alpha subunit of eukaryotic initiation factor 2 from inhibitory phosphorylation and by removing the amino-terminal methionine residue from nascent protein. Increased expression of this gene is associated with various forms of cancer and the anti-cancer drugs fumagillin and ovalicin inhibit the protein by irreversibly binding to its active site. A pseudogene of this gene is located on chromosome 2. [provided by RefSeq]

Other Designations eIF-2-associated p67 homolog|initiation factor 2-associated 67 kDa glycoprotein|peptidase M 2

Disease

- [Genetic Predisposition to Disease](#)
- [Lung Neoplasms](#)