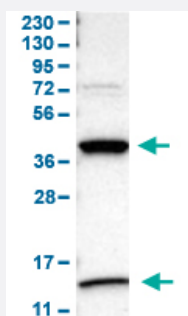


SERPINB5 polyclonal antibody

Catalog # PAB31614

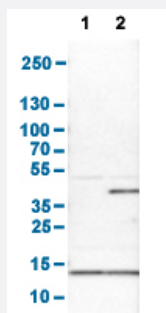
Size 100 uL

Applications



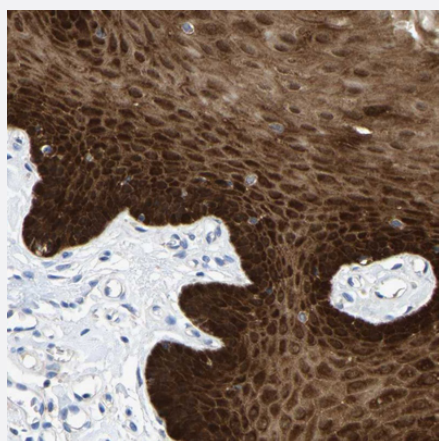
Western Blot (Cell lysate)

Western Blot analysis of human cell line RT-4.



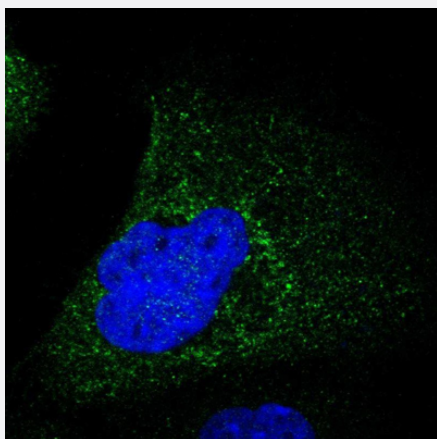
Western Blot

Western Blot analysis of (1) NIH-3T3 cell lysate (Mouse embryonic fibroblast cells), and (2) NBT-II cell lysate (Rat Wistar bladder tumour cells).



Immunohistochemistry (Formalin/PFA-fixed paraffin-embedded sections)

Immunohistochemical staining (Formalin-fixed paraffin-embedded sections) of human oral mucosa shows strong cytoplasmic positivity in squamous epithelial cells.



Immunofluorescence

Immunofluorescent staining of human cell line A-431 shows positivity in cytoplasm. Antibody staining is shown in green.

Specification

Product Description	Rabbit polyclonal antibody raised against partial recombinant human SERPINB5.
Immunogen	Recombinant protein corresponding to amino acids 1-95 of human SERPINB5.
Sequence	MDALQLANSFAVDLKFQQLCEKEPLGNVLFSPICLSTSLSLAQVGAKGDTANEIGQVLHFENVKD VPFGFQTVTSDVNKLSSFYSLKLIKRLYVD
Host	Rabbit
Reactivity	Human, Rat
Form	Liquid
Purification	Antigen affinity purification
Isotype	IgG
Recommend Usage	Immunofluorescence (1-4 ug/mL) Immunohistochemistry (Formalin/PFA-fixed paraffin-embedded sections) (1:50-1:200) Western Blot (1:100-1:250) The optimal working dilution should be determined by the end user.
Storage Buffer	In PBS, pH 7.2 (40% glycerol, 0.02% sodium azide).
Storage Instruction	Store at 4°C for short term storage. For long term storage store at -20°C. Aliquot to avoid repeated freezing and thawing.
Note	This product contains sodium azide: a POISONOUS AND HAZARDOUS SUBSTANCE which should be handled by trained staff only.

Applications

- Western Blot (Cell lysate)

Western Blot analysis of human cell line RT-4.

- Western Blot

Western Blot analysis of (1) NIH-3T3 cell lysate (Mouse embryonic fibroblast cells), and (2) NBT-II cell lysate (Rat Wistar bladder tumour cells).

- Immunohistochemistry (Formalin/PFA-fixed paraffin-embedded sections)

Immunohistochemical staining (Formalin-fixed paraffin-embedded sections) of human oral mucosa shows strong cytoplasmic positivity in squamous epithelial cells.

- Immunofluorescence

Immunofluorescent staining of human cell line A-431 shows positivity in cytoplasm. Antibody staining is shown in green.

Gene Info — SERPINB5

Entrez GeneID	5268
Protein Accession#	P36952
Gene Name	SERPINB5
Gene Alias	PI5, maspin
Gene Description	serpin peptidase inhibitor, clade B (ovalbumin), member 5
Omim ID	154790
Gene Ontology	Hyperlink
Gene Summary	clade B (ovalbumin)
Other Designations	protease inhibitor 5 (maspin) serine (or cysteine) proteinase inhibitor, clade B (ovalbumin), member 5

Pathway

- [p53 signaling pathway](#)