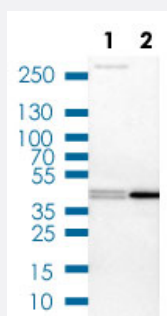


PRMT2 polyclonal antibody

Catalog # PAB31612

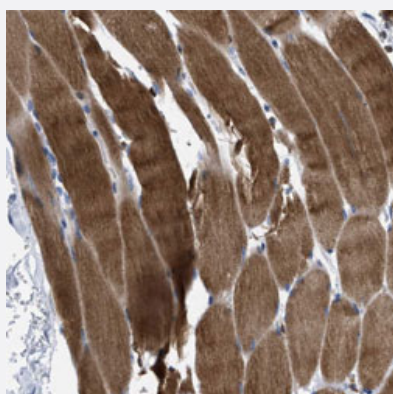
Size 100 uL

Applications



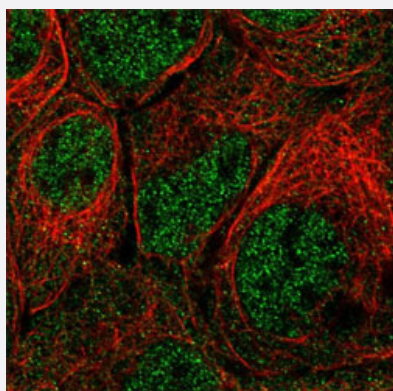
Western Blot (Cell lysate)

Western Blot (Cell lysate) analysis of (1) NIH-3T3 cell lysate (Mouse embryonic fibroblast cells) and (2) NBT-II cell lysate (Rat Wistar bladder tumour cells).



Immunohistochemistry (Formalin/PFA-fixed paraffin-embedded sections)

Immunohistochemical staining of human skeletal muscle shows strong cytoplasmic positivity in myocytes.



Immunofluorescence

Immunofluorescent staining of A-431 cell line with antibody shows positivity in nucleoplasm and cytosol (green).

Specification

Product Description	Rabbit polyclonal antibody raised against partial recombinant human PRMT2.
Immunogen	Recombinant protein corresponding to human PRMT2.
Sequence	LRFDIRKAGTLHGFTAWFSVHFQSLQEGQPPQVLSTGPFHPTTHWKQTLFMMDDPVPVHTGDVV TGSVVLQRNPVWRRHMSVALSW
Host	Rabbit
Reactivity	Human, Mouse, Rat
Form	Liquid
Purification	Antigen affinity purification
Isotype	IgG
Recommend Usage	Immunohistochemistry (Formalin/PFA-fixed paraffin-embedded sections) (1:200-500) Western Blot (1:100-250) Immunofluorescence (1-4 ug/mL) The optimal working dilution should be determined by the end user.
Storage Buffer	In PBS, pH 7.2 (40% glycerol, 0.02% sodium azide).
Storage Instruction	Store at 4°C. For long term storage store at -20°C. Aliquot to avoid repeated freezing and thawing.
Note	This product contains sodium azide: a POISONOUS AND HAZARDOUS SUBSTANCE which should be handled by trained staff only.

Applications

- Western Blot (Cell lysate)

Western Blot (Cell lysate) analysis of (1) NIH-3T3 cell lysate (Mouse embryonic fibroblast cells) and (2) NBT-II cell lysate (Rat Wistar bladder tumour cells).

- Immunohistochemistry (Formalin/PFA-fixed paraffin-embedded sections)

Immunohistochemical staining of human skeletal muscle shows strong cytoplasmic positivity in myocytes.

- Immunofluorescence

Immunofluorescent staining of A-431 cell line with antibody shows positivity in nucleoplasm and cytosol (green).

Gene Info — PRMT2

Entrez GeneID

[3275](#)

Protein Accession#	P55345
Gene Name	PRMT2
Gene Alias	HRMT1L1, MGC111373
Gene Description	protein arginine methyltransferase 2
Omim ID	601961
Gene Ontology	Hyperlink
Gene Summary	S. cerevisiae)-like 1 HMT1 hnRNP methyltransferase-like 1 OTTHUMP00000115881 PRMT2 alpha PRMT2 beta PRMT2 gamma protein arginine N-methyltransferase 2
Other Designations	HMT1 (hnRNP methyltransferase, S. cerevisiae)-like 1 HMT1 hnRNP methyltransferase-like 1 OTTHUMP00000115881 PRMT2 alpha PRMT2 beta PRMT2 gamma protein arginine N-methyltransferase 2

Disease

- [Spinal Dysraphism](#)