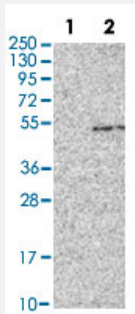


# GDF3 polyclonal antibody

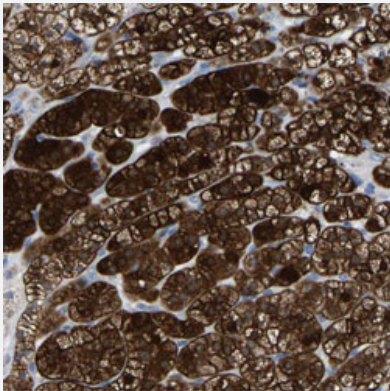
Catalog # PAB31605      Size 100 uL

## Applications



### Western Blot (Transfected lysate)

Western Blot (Cell lysate) analysis of (1) Negative control (vector only transfected HEK293T lysate), and (2) Over-expression lysate (Co-expressed with a C-terminal myc-DDK tag (~3.1 kDa) in mammalian HEK293T cells).



### Immunohistochemistry (Formalin/PFA-fixed paraffin-embedded sections)

Immunohistochemical staining of human adrenal gland shows strong cytoplasmic positivity in cortical cells.

## Specification

Product Description	Rabbit polyclonal antibody raised against partial recombinant human GDF3.
Immunogen	Recombinant protein corresponding to human GDF3.
Sequence	HKWIIAPKGFMAN YCHGECPSLTISLNSSNYAFMQALMHA VDPEIPQAVCIPTKLSPISMLYQDNN DNVILRHYEDMVV
Host	Rabbit
Reactivity	Human

Form	Liquid
Purification	Antigen affinity purification
Isotype	IgG
Recommend Usage	Immunohistochemistry (Formalin/PFA-fixed paraffin-embedded sections) (1:20-50) Western Blot (1:100-250) The optimal working dilution should be determined by the end user.
Storage Buffer	In PBS, pH 7.2 (40% glycerol, 0.02% sodium azide).
Storage Instruction	Store at 4°C. For long term storage store at -20°C. Aliquot to avoid repeated freezing and thawing.
Note	This product contains sodium azide: a POISONOUS AND HAZARDOUS SUBSTANCE which should be handled by trained staff only.

## Applications

- Western Blot (Transfected lysate)

Western Blot (Cell lysate) analysis of (1) Negative control (vector only transfected HEK293T lysate), and (2) Over-expression lysate (Co-expressed with a C-terminal myc-DDK tag (~3.1 kDa) in mammalian HEK293T cells).

- Immunohistochemistry (Formalin/PFA-fixed paraffin-embedded sections)

Immunohistochemical staining of human adrenal gland shows strong cytoplasmic positivity in cortical cells.

## Gene Info — GDF3

Entrez GeneID	<a href="#">9573</a>
Protein Accession#	<a href="#">Q9NR23</a>
Gene Name	GDF3
Gene Alias	-
Gene Description	growth differentiation factor 3
Omim ID	<a href="#">606522</a>
Gene Ontology	<a href="#">Hyperlink</a>

**Gene Summary**

The protein encoded by this gene is a member of the bone morphogenetic protein (BMP) family and the TGF-beta superfamily. This group of proteins is characterized by a polybasic proteolytic processing site which is cleaved to produce a mature protein containing seven conserved cysteine residues. The members of this family are regulators of cell growth and differentiation in both embryonic and adult tissues. [provided by RefSeq]

**Other Designations**

-

**Disease**

- [Genetic Predisposition to Disease](#)
- [Obesity](#)
- [Ovarian Failure](#)
- [Polycystic Ovary Syndrome](#)
- [Puberty](#)
- [Thrombophilia](#)
- [Tobacco Use Disorder](#)