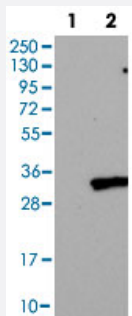


# TMEM38B polyclonal antibody

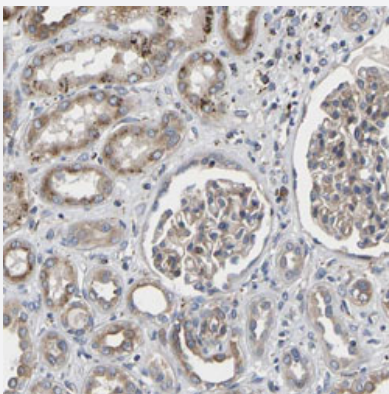
Catalog # PAB31604      Size 100 uL

## Applications



### Western Blot (Transfected lysate)

Western Blot (Cell lysate) analysis of (1) Negative control (vector only transfected HEK293T lysate), and (2) Over-expression lysate (Co-expressed with a C-terminal myc-DDK tag (~3.1 kDa) in mammalian HEK293T cells).



### Immunohistochemistry (Formalin/PFA-fixed paraffin-embedded sections)

Immunohistochemical staining of human kidney shows moderate cytoplasmic positivity in cells in tubules.

## Specification

Product Description	Rabbit polyclonal antibody raised against partial recombinant human TMEM38B.
Immunogen	Recombinant protein corresponding to human TMEM38B.
Sequence	FEDTLSWMLFGWQQPFSSCEKKSEAKSPSNGVGLASKPVDVASDNV
Host	Rabbit
Reactivity	Human
Form	Liquid

Purification	Antigen affinity purification
Isotype	IgG
Recommend Usage	Immunohistochemistry (Formalin/PFA-fixed paraffin-embedded sections) (1:20-50) Western Blot (1:100-250) The optimal working dilution should be determined by the end user.
Storage Buffer	In PBS, pH 7.2 (40% glycerol, 0.02% sodium azide).
Storage Instruction	Store at 4°C. For long term storage store at -20°C. Aliquot to avoid repeated freezing and thawing.
Note	This product contains sodium azide: a POISONOUS AND HAZARDOUS SUBSTANCE which should be handled by trained staff only.

## Applications

- Western Blot (Transfected lysate)

Western Blot (Cell lysate) analysis of (1) Negative control (vector only transfected HEK293T lysate), and (2) Over-expression lysate (Co-expressed with a C-terminal myc-DDK tag (~3.1 kDa) in mammalian HEK293T cells).

- Immunohistochemistry (Formalin/PFA-fixed paraffin-embedded sections)

Immunohistochemical staining of human kidney shows moderate cytoplasmic positivity in cells in tubules.

## Gene Info — TMEM38B

Entrez GeneID	<a href="#">55151</a>
Protein Accession#	<a href="#">Q9NVV0</a>
Gene Name	TMEM38B
Gene Alias	C9orf87, D4Ert89e, FLJ10493, TRICB, bA219P18.1
Gene Description	transmembrane protein 38B
Omim ID	<a href="#">611236</a>
Gene Ontology	<a href="#">Hyperlink</a>
Other Designations	OTTHUMP00000021849 OTTHUMP00000063855

## Disease

- [Cleft Lip](#)
- [Cleft Palate](#)
- [Genetic Predisposition to Disease](#)
- [Obesity](#)
- [Tooth Abnormalities](#)