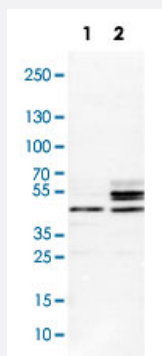


SCRN1 polyclonal antibody

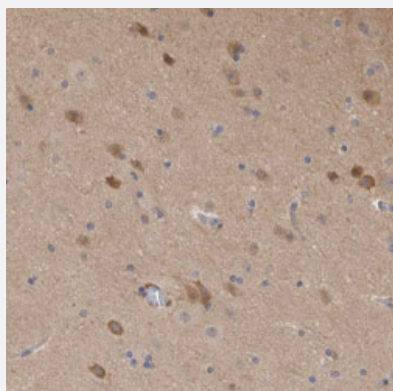
Catalog # PAB31582 Size 100 uL

Applications



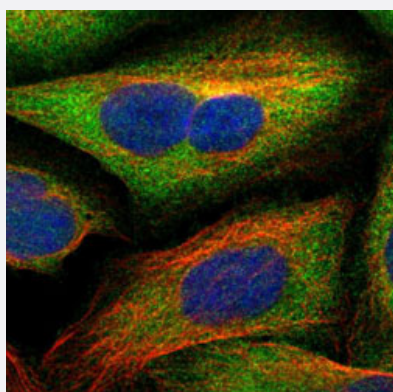
Western Blot (Cell lysate)

Western Blot analysis of Lane 1: NIH-3T3 cell lysate (mouse embryonic fibroblast cells) and Lane 2: NBT-II cell lysate (Wistar rat bladder tumour cells) with SCRN1 polyclonal antibody (Cat # PAB31582).



Immunohistochemistry (Formalin/PFA-fixed paraffin-embedded sections)

Immunohistochemical staining (Formalin-fixed paraffin-embedded sections) of human cerebral cortex with SCRN1 polyclonal antibody (Cat # PAB31582) shows moderate cytoplasmic positivity in neuronal cells.



Immunofluorescence

Immunofluorescent staining of U-2 OS cells with SCRN1 polyclonal antibody (Cat # PAB31582) (Green) shows localization to cytosol.

Specification

Product Description	Rabbit polyclonal antibody raised against partial recombinant human SCRNI.
Immunogen	Recombinant protein corresponding to human SCRNI.
Sequence	VKLVPKTSQSPCFGDDDPAAKKEPRFQEKPDRRHELYKAHEWARAIIESDQEQGRKL RSTMLELEK QGLEAMEEILTSEPLDPAEVGDLFYDCVD
Host	Rabbit
Reactivity	Human, Mouse, Rat
Form	Liquid
Purification	Antigen affinity purification
Isotype	IgG
Recommend Usage	Immunofluorescence (1-4 ug/mL) Immunohistochemistry (Formalin/PFA-fixed paraffin-embedded sections) (1:2500-1:5000) Western Blot (1:100-1:250) The optimal working dilution should be determined by the end user.
Storage Buffer	In PBS, pH 7.2 (40% glycerol, 0.02% sodium azide).
Storage Instruction	Store at 4°C. For long term storage store at -20°C. Aliquot to avoid repeated freezing and thawing.
Note	This product contains sodium azide: a POISONOUS AND HAZARDOUS SUBSTANCE which should be handled by trained staff only.

Applications

- Western Blot (Cell lysate)

Western Blot analysis of Lane 1: NIH-3T3 cell lysate (mouse embryonic fibroblast cells) and Lane 2: NBT-II cell lysate (Wistar rat bladder tumour cells) with SCRNI polyclonal antibody (Cat # PAB31582).

- Immunohistochemistry (Formalin/PFA-fixed paraffin-embedded sections)

Immunohistochemical staining (Formalin-fixed paraffin-embedded sections) of human cerebral cortex with SCRNI polyclonal antibody (Cat # PAB31582) shows moderate cytoplasmic positivity in neuronal cells.

- Immunofluorescence

Immunofluorescent staining of U-2 OS cells with SCRNI polyclonal antibody (Cat # PAB31582) (Green) shows localization to cytosol.

Gene Info — SCRN1

Entrez GeneID	9805
Protein Accession#	Q12765
Gene Name	SCRN1
Gene Alias	KIAA0193, SES1
Gene Description	secernin 1
Gene Ontology	Hyperlink
Gene Summary	This gene likely encodes a member of the secernin family of proteins. A similar protein in rat functions in regulation of exocytosis in mast cells. Alternatively spliced transcript variants have been described. [provided by RefSeq]
Other Designations	-

Disease

- [Tobacco Use Disorder](#)