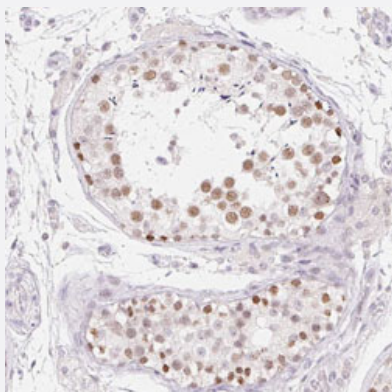


MORC1 polyclonal antibody

Catalog # PAB31577 Size 100 uL

Applications



Immunohistochemistry (Formalin/PFA-fixed paraffin-embedded sections)

Immunohistochemical staining (Formalin-fixed paraffin-embedded sections) of human testis with MORC1 polyclonal antibody (Cat # PAB31577) shows moderate nuclear positivity in cells in seminiferous ducts.

Specification

Product Description	Rabbit polyclonal antibody raised against partial recombinant human MORC1.
Immunogen	Recombinant protein corresponding to human MORC1.
Sequence	LSSFELSASRRGQKRNIETDSDVEYSETKIMKKSMECKMNSQQQRIPVALPENVKLAERSQRS QIANITTVWRAQPTEGCLKNAQAASWEMKRKQ
Host	Rabbit
Reactivity	Human
Form	Liquid
Purification	Antigen affinity purification
Isotype	IgG
Recommend Usage	Immunohistochemistry (Formalin/PFA-fixed paraffin-embedded sections) (1:2500-1:5000) The optimal working dilution should be determined by the end user.
Storage Buffer	In PBS, pH 7.2 (40% glycerol, 0.02% sodium azide).

Storage Instruction

Store at 4°C. For long term storage store at -20°C.
Aliquot to avoid repeated freezing and thawing.

Note

This product contains sodium azide: a POISONOUS AND HAZARDOUS SUBSTANCE which should be handled by trained staff only.

Applications

- Immunohistochemistry (Formalin/PFA-fixed paraffin-embedded sections)

Immunohistochemical staining (Formalin-fixed paraffin-embedded sections) of human testis with MORC1 polyclonal antibody (Cat # PAB31577) shows moderate nuclear positivity in cells in seminiferous ducts.

Gene Info — MORC1

Entrez GeneID[27136](#)**Protein Accession#**[Q86VD1](#)**Gene Name**

MORC1

Gene Alias

MORC, ZCW6

Gene Description

MORC family CW-type zinc finger 1

Omim ID[603205](#)**Gene Ontology**[Hyperlink](#)**Gene Summary**

This gene encodes the human homolog of mouse morc and like the mouse protein it is testis-specific. Mouse studies support a testis-specific function since only male knockout mice are infertile; infertility is the only apparent defect. These studies further support a role for this protein early in spermatogenesis, possibly by affecting entry into apoptosis because testis from knockout mice show greatly increased numbers of apoptotic cells. [provided by RefSeq]

Other Designations

microorchidia homolog[microorchidia, mouse, homolog of]microorchidia, mouse, homolog of

Disease

- [Tobacco Use Disorder](#)