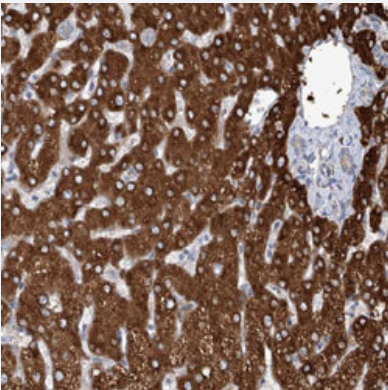


CIB4 polyclonal antibody

Catalog # PAB31576 Size 100 uL

Applications



Immunohistochemistry (Formalin/PFA-fixed paraffin-embedded sections)

Immunohistochemical staining (Formalin-fixed paraffin-embedded sections) of human liver with CIB4 polyclonal antibody (Cat # PAB31576) shows strong cytoplasmic positivity in hepatocytes.

Specification

Product Description	Rabbit polyclonal antibody raised against partial recombinant human CIB4.
Immunogen	Recombinant protein corresponding to human CIB4.
Sequence	ACPSLKIEYAFRIYDFNENGFI DEEDLQRILRLNSDDMS EDLLMDLTNHVLS ESDLNDNMLSFS EFEHAMAKSPDFMNSFRIHFWGC
Host	Rabbit
Reactivity	Human
Form	Liquid
Purification	Antigen affinity purification
Isotype	IgG
Recommend Usage	Immunohistochemistry (Formalin/PFA-fixed paraffin-embedded sections) (1:200-1:500) The optimal working dilution should be determined by the end user.
Storage Buffer	In PBS, pH 7.2 (40% glycerol, 0.02% sodium azide).

Storage Instruction

Store at 4°C. For long term storage store at -20°C.
Aliquot to avoid repeated freezing and thawing.

Note

This product contains sodium azide: a POISONOUS AND HAZARDOUS SUBSTANCE which should be handled by trained staff only.

Applications

- Immunohistochemistry (Formalin/PFA-fixed paraffin-embedded sections)

Immunohistochemical staining (Formalin-fixed paraffin-embedded sections) of human liver with CIB4 polyclonal antibody (Cat # PAB31576) shows strong cytoplasmic positivity in hepatocytes.

Gene Info — CIB4

Entrez GeneID [130106](#)

Protein Accession# [A0PJX0](#)

Gene Name CIB4

Gene Alias KIP4

Gene Description calcium and integrin binding family member 4

Omim ID [610646](#)

Gene Ontology [Hyperlink](#)

Other Designations -

Disease

- [Tobacco Use Disorder](#)