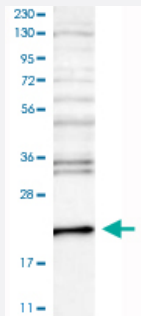


CETN3 polyclonal antibody

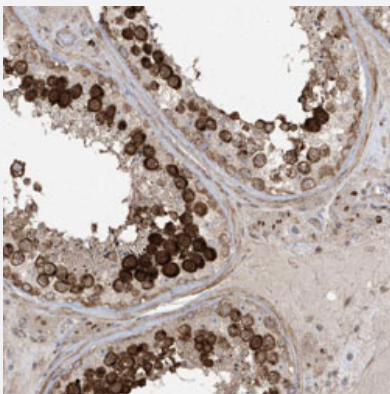
Catalog # PAB31573 Size 100 uL

Applications



Western Blot (Cell lysate)

Western Blot analysis of RT-4 cell lysate with CETN3 polyclonal antibody (Cat # PAB31573).



Immunohistochemistry (Formalin/PFA-fixed paraffin-embedded sections)

Immunohistochemical staining (Formalin-fixed paraffin-embedded sections) of human testis with CETN3 polyclonal antibody (Cat # PAB31573) shows cytoplasmic and nucleolar positivity in cells in seminiferous ducts.

Specification

Product Description	Rabbit polyclonal antibody raised against partial recombinant human CETN3.
Immunogen	Recombinant protein corresponding to human CETN3.
Sequence	AMRALGFDVKKADVLKILKDYDREATGKITFEDFNEVVTDWILERDPHEEILK
Host	Rabbit
Reactivity	Human
Form	Liquid

Purification	Antigen affinity purification
Isotype	IgG
Recommend Usage	Immunohistochemistry (Formalin/PFA-fixed paraffin-embedded sections) (1:500-1:1000) Western Blot (1:100-1:250) The optimal working dilution should be determined by the end user.
Storage Buffer	In PBS, pH 7.2 (40% glycerol, 0.02% sodium azide).
Storage Instruction	Store at 4°C. For long term storage store at -20°C. Aliquot to avoid repeated freezing and thawing.
Note	This product contains sodium azide: a POISONOUS AND HAZARDOUS SUBSTANCE which should be handled by trained staff only.

Applications

- Western Blot (Cell lysate)

Western Blot analysis of RT-4 cell lysate with CETN3 polyclonal antibody (Cat # PAB31573).

- Immunohistochemistry (Formalin/PFA-fixed paraffin-embedded sections)

Immunohistochemical staining (Formalin-fixed paraffin-embedded sections) of human testis with CETN3 polyclonal antibody (Cat # PAB31573) shows cytoplasmic and nucleolar positivity in cells in seminiferous ducts.

Gene Info — CETN3

Entrez GeneID	1070
Protein Accession#	O15182
Gene Name	CETN3
Gene Alias	CEN3, MGC12502, MGC138245
Gene Description	centrin, EF-hand protein, 3 (CDC31 homolog, yeast)
Omim ID	602907
Gene Ontology	Hyperlink

Gene Summary

The protein encoded by this gene contains four EF-hand calcium binding domains, and is a member of the centrin protein family. Centrins are evolutionarily conserved proteins similar to the CDC 31 protein of *S. cerevisiae*. Yeast CDC31 is located at the centrosome of interphase and mitotic cells, where it plays a fundamental role in centrosome duplication and separation. Multiple forms of the proteins similar to the yeast centrin have been identified in human and other mammalian cells, some of which have been shown to be associated with centrosome fractions. This protein appears to be one of the most abundant centrins associated with centrosome, which suggests a similar function to its yeast counterpart. [provided by RefSeq]

Other Designations

CDC31 yeast homolog|EF-hand superfamily member|centrin 3