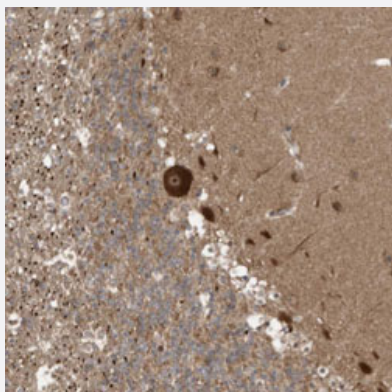


# ALS2CR8 polyclonal antibody

Catalog # PAB31568      Size 100 uL

## Applications



### Immunohistochemistry (Formalin/PFA-fixed paraffin-embedded sections)

Immunohistochemical staining (Formalin-fixed paraffin-embedded sections) of human cerebellum with ALS2CR8 polyclonal antibody (Cat # PAB31568) shows strong cytoplasmic and nucleolar positivity in Purkinje cells.

## Specification

Product Description	Rabbit polyclonal antibody raised against partial recombinant human ALS2CR8.
Immunogen	Recombinant protein corresponding to human ALS2CR8.
Sequence	SQGIEQVYAVRKQLRKFFVERELFKPDEVPERHNLSFFPTVNDIKNHIHEVQKSLRNGDTVYNSEIIP ATLQWTTDSGNILKETMTVTFAEGNSPGESITTK
Host	Rabbit
Reactivity	Human
Form	Liquid
Purification	Antigen affinity purification
Isotype	IgG
Recommend Usage	Immunohistochemistry (Formalin/PFA-fixed paraffin-embedded sections) (1:50-1:200) The optimal working dilution should be determined by the end user.
Storage Buffer	In PBS, pH 7.2 (40% glycerol, 0.02% sodium azide).

**Storage Instruction**

Store at 4°C. For long term storage store at -20°C.  
Aliquot to avoid repeated freezing and thawing.

**Note**

This product contains sodium azide: a POISONOUS AND HAZARDOUS SUBSTANCE which should be handled by trained staff only.

## Applications

- Immunohistochemistry (Formalin/PFA-fixed paraffin-embedded sections)

Immunohistochemical staining (Formalin-fixed paraffin-embedded sections) of human cerebellum with ALS2CR8 polyclonal antibody (Cat # PAB31568) shows strong cytoplasmic and nucleolar positivity in Purkinje cells.

## Gene Info — ALS2CR8

**Entrez GeneID**[79800](#)**Protein Accession#**[Q8N187](#)**Gene Name**

ALS2CR8

**Gene Alias**

CARF, DKFZp667N246, FLJ12675, FLJ21579, NYD-SP24

**Gene Description**

amyotrophic lateral sclerosis 2 (juvenile) chromosome region, candidate 8

**Omim ID**[607586](#)**Gene Ontology**[Hyperlink](#)**Gene Summary**

O

**Other Designations**

calcium-response factor