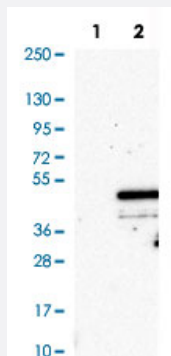


AIM2 polyclonal antibody

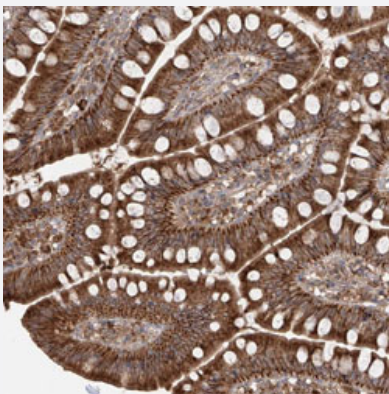
Catalog # PAB31565 Size 100 uL

Applications



Western Blot (Transfected lysate)

Western Blot analysis of Lane 1: negative control (vector only transfected HEK293T cell lysate) and Lane 2: over-expression lysate (co-expressed with a C-terminal myc-DDK tag in mammalian HEK293T cells) with AIM2 polyclonal antibody (Cat # PAB31565).



Immunohistochemistry (Formalin/PFA-fixed paraffin-embedded sections)

Immunohistochemical staining (Formalin-fixed paraffin-embedded sections) of human small intestine with AIM2 polyclonal antibody (Cat # PAB31565) shows strong cytoplasmic positivity in glandular cells.

Specification

| | |
|---------------------|--|
| Product Description | Rabbit polyclonal antibody raised against partial recombinant human AIM2. |
| Immunogen | Recombinant protein corresponding to human AIM2. |
| Sequence | SDQKVNVP LNIRKAGETPKINTLQTQPLGTIVNGLFVVQKVTEKKKNILFDLSDNTGKMEVLGVRN EDTMKCKEGDK |
| Host | Rabbit |
| Reactivity | Human |

| | |
|---------------------|---|
| Form | Liquid |
| Purification | Antigen affinity purification |
| Isotype | IgG |
| Recommend Usage | Immunohistochemistry (Formalin/PFA-fixed paraffin-embedded sections) (1:50-1:200) Western Blot (1:100-1:250) The optimal working dilution should be determined by the end user. |
| Storage Buffer | In PBS, pH 7.2 (40% glycerol, 0.02% sodium azide). |
| Storage Instruction | Store at 4°C. For long term storage store at -20°C. Aliquot to avoid repeated freezing and thawing. |
| Note | This product contains sodium azide: a POISONOUS AND HAZARDOUS SUBSTANCE which should be handled by trained staff only. |

Applications

- Western Blot (Transfected lysate)

Western Blot analysis of Lane 1: negative control (vector only transfected HEK293T cell lysate) and Lane 2: over-expression lysate (co-expressed with a C-terminal myc-DDK tag in mammalian HEK293T cells) with AIM2 polyclonal antibody (Cat # PAB31565).

- Immunohistochemistry (Formalin/PFA-fixed paraffin-embedded sections)

Immunohistochemical staining (Formalin-fixed paraffin-embedded sections) of human small intestine with AIM2 polyclonal antibody (Cat # PAB31565) shows strong cytoplasmic positivity in glandular cells.

Gene Info — AIM2

| | |
|--------------------|---------------------------|
| Entrez GeneID | 9447 |
| Protein Accession# | O14862 |
| Gene Name | AIM2 |
| Gene Alias | PYHIN4 |
| Gene Description | absent in melanoma 2 |
| Omim ID | 604578 |
| Gene Ontology | Hyperlink |

Gene Summary

AIM2 is a member of the IFI202X /IFI16 family. It plays a putative role in tumorigenic reversion and may control cell proliferation. Interferon-gamma induces expression of AIM2. [provided by RefSeq]

Other Designations

OTTHUMP00000035296

Disease

- [Genetic Predisposition to Disease](#)
- [Lupus Erythematosus](#)