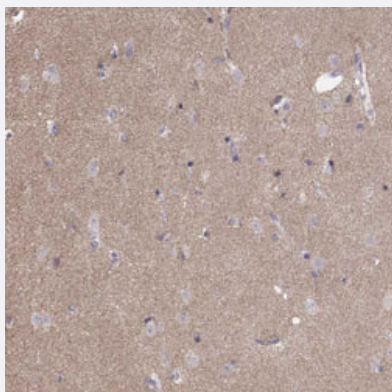


# NCAM2 polyclonal antibody

Catalog # PAB31563      Size 100 uL

## Applications



### Immunohistochemistry (Formalin/PFA-fixed paraffin-embedded sections)

Immunohistochemical staining (Formalin-fixed paraffin-embedded sections) of human caudate nucleus with NCAM2 polyclonal antibody (Cat # PAB31563) shows positivity in neuronal processes.

## Specification

Product Description	Rabbit polyclonal antibody raised against partial recombinant human NCAM2.
Immunogen	Recombinant protein corresponding to human NCAM2.
Sequence	NVPPAISM PQKSFNATAERGEEMTFSCRASGSPEPAISWFRNGKLIENEKYILKGSNTELTVRNII NSDGGPY
Host	Rabbit
Reactivity	Human
Form	Liquid
Purification	Antigen affinity purification
Isotype	IgG
Recommend Usage	Immunohistochemistry (Formalin/PFA-fixed paraffin-embedded sections) (1:500-1:1000) The optimal working dilution should be determined by the end user.
Storage Buffer	In PBS, pH 7.2 (40% glycerol, 0.02% sodium azide).

**Storage Instruction**

Store at 4°C. For long term storage store at -20°C.  
Aliquot to avoid repeated freezing and thawing.

**Note**

This product contains sodium azide: a POISONOUS AND HAZARDOUS SUBSTANCE which should be handled by trained staff only.

## Applications

- Immunohistochemistry (Formalin/PFA-fixed paraffin-embedded sections)

Immunohistochemical staining (Formalin-fixed paraffin-embedded sections) of human caudate nucleus with NCAM2 polyclonal antibody (Cat # PAB31563) shows positivity in neuronal processes.

## Gene Info — NCAM2

**Entrez GeneID**[4685](#)**Protein Accession#**[O15394](#)**Gene Name**

NCAM2

**Gene Alias**

MGC51008, NCAM21

**Gene Description**

neural cell adhesion molecule 2

**Omim ID**[602040](#)**Gene Ontology**[Hyperlink](#)**Gene Summary**

The protein encoded by this gene belongs to the immunoglobulin superfamily. It is a type I membrane protein and may function in selective fasciculation and zone-to-zone projection of the primary olfactory axons. [provided by RefSeq]

**Other Designations**

OTTHUMP00000095814

## Publication Reference

- [Human skin-derived stem cells as a novel cell source for in vitro hepatotoxicity screening of pharmaceuticals.](#)

Rodrigues RM, De Kock J, Branson S, Vinken M, Meganathan K, Chaudhari U, Sachinidis A, Govaere O, Roskams T, De Boe V, Vanhaecke T, Rogiers V.

Stem Cells and Development 2014 Jan; 23(1):44.

Application: ICC, IF, Human, hSKP-HPC cells

## Pathway

- [Cell adhesion molecules \(CAMs\)](#)
- [Prion diseases](#)

## Disease

- [Alzheimer Disease](#)
- [Genetic Predisposition to Disease](#)
- [Mental Disorders](#)
- [Tobacco Use Disorder](#)