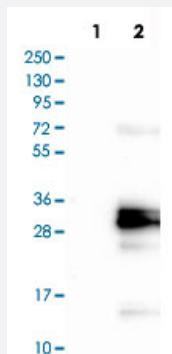


PAEP polyclonal antibody

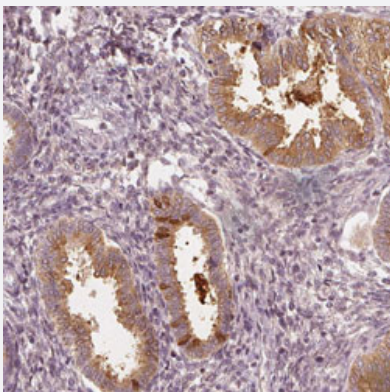
Catalog # PAB31560 Size 100 uL

Applications



Western Blot (Transfected lysate)

Western Blot analysis of Lane 1: negative control (vector only transfected HEK293T cell lysate) and Lane 2: over-expression lysate (co-expressed with a C-terminal myc-DDK tag in mammalian HEK293T cells) with PAEP polyclonal antibody (Cat # PAB31560).



Immunohistochemistry (Formalin/PFA-fixed paraffin-embedded sections)

Immunohistochemical staining (Formalin-fixed paraffin-embedded sections) of human uterus with PAEP polyclonal antibody (Cat # PAB31560) shows moderate positivity in a subset of glandular cells.

Specification

Product Description	Rabbit polyclonal antibody raised against partial recombinant human PAEP.
Immunogen	Recombinant protein corresponding to human PAEP.
Sequence	QDLELPKLAGTWHSMAMATNNISLMATLKAPLRVHITSLLPTPEDNLEMLHRWENNSCVEKKVLG EKTENPKKFKI
Host	Rabbit
Reactivity	Human

Form	Liquid
Purification	Antigen affinity purification
Isotype	IgG
Recommend Usage	Immunohistochemistry (Formalin/PFA-fixed paraffin-embedded sections) (1:2500-1:5000) Western Blot (1:100-1:250) The optimal working dilution should be determined by the end user.
Storage Buffer	In PBS, pH 7.2 (40% glycerol, 0.02% sodium azide).
Storage Instruction	Store at 4°C. For long term storage store at -20°C. Aliquot to avoid repeated freezing and thawing.
Note	This product contains sodium azide: a POISONOUS AND HAZARDOUS SUBSTANCE which should be handled by trained staff only.

Applications

- Western Blot (Transfected lysate)

Western Blot analysis of Lane 1: negative control (vector only transfected HEK293T cell lysate) and Lane 2: over-expression lysate (co-expressed with a C-terminal myc-DDK tag in mammalian HEK293T cells) with PAEP polyclonal antibody (Cat # PAB31560).

- Immunohistochemistry (Formalin/PFA-fixed paraffin-embedded sections)

Immunohistochemical staining (Formalin-fixed paraffin-embedded sections) of human uterus with PAEP polyclonal antibody (Cat # PAB31560) shows moderate positivity in a subset of glandular cells.

Gene Info — PAEP

Entrez GeneID	5047
Protein Accession#	P09466
Gene Name	PAEP
Gene Alias	GD, GdA, GdF, GdS, MGC138509, MGC142288, PAEG, PEP, PP14
Gene Description	progesterone-associated endometrial protein
Omim ID	173310
Gene Ontology	Hyperlink

Gene Summary

This gene is a member of the kernel lipocalin superfamily whose members share relatively low sequence similarity but have highly conserved exon/intron structure and three-dimensional protein folding. Most lipocalins are clustered on the long arm of chromosome 9. The encoded glycoprotein has been previously referred to as pregnancy-associated endometrial alpha-2-globulin, placental protein 14, and glycodelin, but has been officially named progesterone-associated endometrial protein. Three distinct forms, with identical protein backbones but different glycosylation profiles, are found in amniotic fluid, follicular fluid and seminal plasma of the reproductive system. These glycoproteins have distinct and essential roles in regulating a uterine environment suitable for pregnancy and in the timing and occurrence of the appropriate sequence of events in the fertilization process. A number of alternatively spliced transcript variants have been observed at this locus, but the full-length nature of only two, each encoding the same protein, has been determined. [provided by RefSeq]

Other Designations

OTTHUMP00000022548|OTTHUMP00000022549|OTTHUMP00000022550|PP14 protein (placental protein 14)|alpha uterine protein|glycodelin|glycodelin-A|glycodelin-F|glycodelin-S|pregnancy-associated endometrial alpha-2-globulin|progesterone-associated endometrial prot