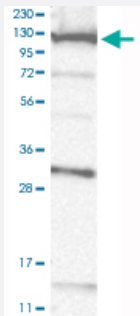


COG1 polyclonal antibody

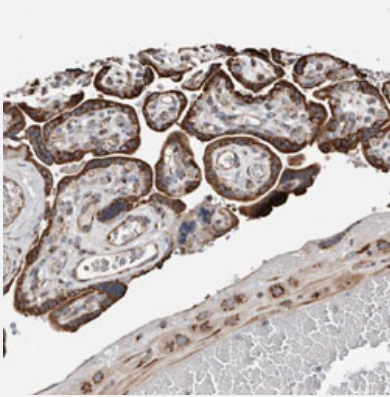
Catalog # PAB31558 Size 100 uL

Applications



Western Blot (Cell lysate)

Western Blot analysis of RT-4 cell lysate with COG1 polyclonal antibody (Cat # PAB31558).



Immunohistochemistry (Formalin/PFA-fixed paraffin-embedded sections)

Immunohistochemical staining (Formalin-fixed paraffin-embedded sections) of human placenta with COG1 polyclonal antibody (Cat # PAB31558) shows strong cytoplasmic positivity in trophoblastic cells.

Specification

Product Description	Rabbit polyclonal antibody raised against partial recombinant human COG1.
Immunogen	Recombinant protein corresponding to human COG1.
Sequence	FCSALDSKLKVKLDDLLAYLPSSDSSLPKDVSPTQAKSSAFDRYADAGTVQEMLRTQSVACIKHI VDCIRAEQLSIEEGVQGQQDALNSAKLHSVLFMA
Host	Rabbit
Reactivity	Human

Form	Liquid
Purification	Antigen affinity purification
Isotype	IgG
Recommend Usage	Immunohistochemistry (Formalin/PFA-fixed paraffin-embedded sections) (1:500-1:1000) Western Blot (1:100-1:250) The optimal working dilution should be determined by the end user.
Storage Buffer	In PBS, pH 7.2 (40% glycerol, 0.02% sodium azide).
Storage Instruction	Store at 4°C. For long term storage store at -20°C. Aliquot to avoid repeated freezing and thawing.
Note	This product contains sodium azide: a POISONOUS AND HAZARDOUS SUBSTANCE which should be handled by trained staff only.

Applications

- Western Blot (Cell lysate)

Western Blot analysis of RT-4 cell lysate with COG1 polyclonal antibody (Cat # PAB31558).

- Immunohistochemistry (Formalin/PFA-fixed paraffin-embedded sections)

Immunohistochemical staining (Formalin-fixed paraffin-embedded sections) of human placenta with COG1 polyclonal antibody (Cat # PAB31558) shows strong cytoplasmic positivity in trophoblastic cells.

Gene Info — COG1

Entrez GeneID	9382
Protein Accession#	Q8WTW3
Gene Name	COG1
Gene Alias	CDG2G, DKFZp762L1710, KIAA1381, LDLB
Gene Description	component of oligomeric golgi complex 1
Omim ID	606973 611209
Gene Ontology	Hyperlink

Gene Summary

The protein encoded by this gene is one of eight proteins (Cog1-8) which form a Golgi-localized complex (COG) required for normal Golgi morphology and function. It is thought that this protein is required for steps in the normal medial and trans Golgi-associated processing of glycoconjugates and plays a role in the organization of the Golgi-localized complex. [provided by RefSeq]

Other Designations

conserved oligomeric Golgi complex protein 1|low density lipoprotein receptor defect B complementing