

LAD1 polyclonal antibody

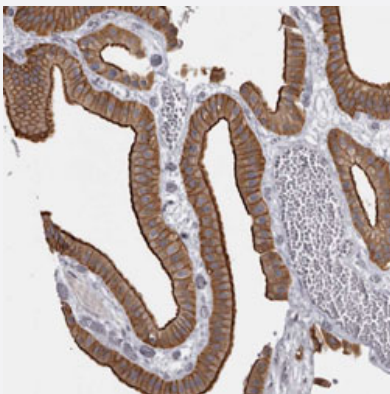
Catalog # PAB31555 Size 100 uL

Applications



Western Blot (Cell lysate)

Western Blot analysis of RT-4 cell lysate with LAD1 polyclonal antibody (Cat # PAB31555).



Immunohistochemistry (Formalin/PFA-fixed paraffin-embedded sections)

Immunohistochemical staining (Formalin-fixed paraffin-embedded sections) of human gall bladder with LAD1 polyclonal antibody (Cat # PAB31555) shows strong luminal membranous and cytoplasmic positivity in glandular cells.

Specification

Product Description	Rabbit polyclonal antibody raised against partial recombinant human LAD1.
Immunogen	Recombinant protein corresponding to human LAD1.
Sequence	EEGRNSLSPVQATQKPLVSKKELEIPRRRLSREQRGPWALEEESLVGREPEERKKGVPEKSP VLEKSSMPKKTAPKSLVSDKTSISEKVLASEKTSLSSEKIAVSEKRNSSSEKKSVEKTSVSEKSL AP
Host	Rabbit
Reactivity	Human

Form	Liquid
Purification	Antigen affinity purification
Isotype	IgG
Recommend Usage	Immunohistochemistry (Formalin/PFA-fixed paraffin-embedded sections) (1:1000-1:2500) Western Blot (1:100-1:250) The optimal working dilution should be determined by the end user.
Storage Buffer	In PBS, pH 7.2 (40% glycerol, 0.02% sodium azide).
Storage Instruction	Store at 4°C. For long term storage store at -20°C. Aliquot to avoid repeated freezing and thawing.
Note	This product contains sodium azide: a POISONOUS AND HAZARDOUS SUBSTANCE which should be handled by trained staff only.

Applications

- Western Blot (Cell lysate)

Western Blot analysis of RT-4 cell lysate with LAD1 polyclonal antibody (Cat # PAB31555).

- Immunohistochemistry (Formalin/PFA-fixed paraffin-embedded sections)

Immunohistochemical staining (Formalin-fixed paraffin-embedded sections) of human gall bladder with LAD1 polyclonal antibody (Cat # PAB31555) shows strong luminal membranous and cytoplasmic positivity in glandular cells.

Gene Info — LAD1

Entrez GeneID	3898
Protein Accession#	O00515
Gene Name	LAD1
Gene Alias	LadA, MGC10355
Gene Description	ladinin 1
Omim ID	602314
Gene Ontology	Hyperlink
Gene Summary	The protein encoded by this gene may be an anchoring filament that is a component of basement membranes. It may contribute to the stability of the association of the epithelial layers with the underlying mesenchyme. [provided by RefSeq]

Other Designations

OTTHUMP00000033878||linear IgA bullous dermatosis antigen||linear IgA disease antigen homolog
