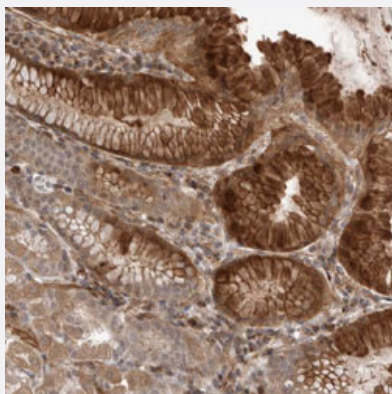


# PEAK1 polyclonal antibody

Catalog # PAB31548

Size 100 uL

## Applications



### Immunohistochemistry (Formalin/PFA-fixed paraffin-embedded sections)

Immunohistochemical staining (Formalin-fixed paraffin-embedded sections) of human stomach with PEAK1 polyclonal antibody (Cat # PAB31548) shows distinct cytoplasmic and membrane positivity in glandular cells.

## Specification

Product Description	Rabbit polyclonal antibody raised against partial recombinant human PEAK1.
Immunogen	Recombinant protein corresponding to human PEAK1.
Sequence	DGQSIGELSIQEHCENKPVIIGWNRNRAALSQKPLNNNNEDDEGISHVPKPYGNNDSAKKMSDN NNGLTEVLKEIAGLDTAPQIR
Host	Rabbit
Reactivity	Human
Form	Liquid
Purification	Antigen affinity purification
Isotype	IgG
Recommend Usage	Immunohistochemistry (Formalin/PFA-fixed paraffin-embedded sections) (1:20-1:50) The optimal working dilution should be determined by the end user.
Storage Buffer	In PBS, pH 7.2 (40% glycerol, 0.02% sodium azide).

**Storage Instruction**

Store at 4°C. For long term storage store at -20°C.  
Aliquot to avoid repeated freezing and thawing.

**Note**

This product contains sodium azide: a POISONOUS AND HAZARDOUS SUBSTANCE which should be handled by trained staff only.

## Applications

- Immunohistochemistry (Formalin/PFA-fixed paraffin-embedded sections)

Immunohistochemical staining (Formalin-fixed paraffin-embedded sections) of human stomach with PEAK1 polyclonal antibody (Cat # PAB31548) shows distinct cytoplasmic and membrane positivity in glandular cells.

## Gene Info — PEAK1

**Entrez GeneID**[79834](#)**Protein Accession#**[Q9H792](#)**Gene Name**

PEAK1

**Gene Alias**

FLJ21140, FLJ34483, KIAA2002

**Gene Description**

NKF3 kinase family member

**Gene Ontology**[Hyperlink](#)**Other Designations**

-

## Disease

- [Tobacco Use Disorder](#)