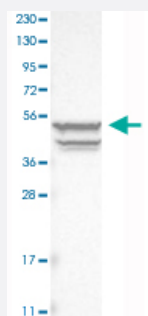


KRT20 polyclonal antibody

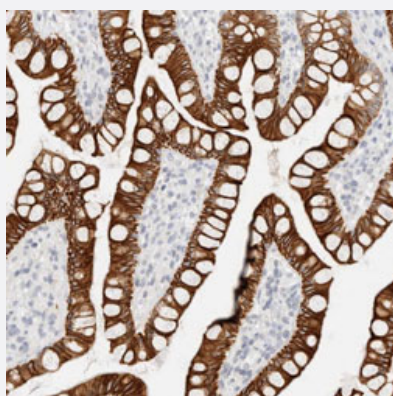
Catalog # PAB31546 Size 100 uL

Applications



Western Blot (Cell lysate)

Western Blot analysis of RT-4 cell lysate with KRT20 polyclonal antibody (Cat # PAB31546).



Immunohistochemistry (Formalin/PFA-fixed paraffin-embedded sections)

Immunohistochemical staining (Formalin-fixed paraffin-embedded sections) of human small intestine with KRT20 polyclonal antibody (Cat # PAB31546) shows distinct cytoplasmic and membranous positivity in glandular cells.

Specification

Product Description	Rabbit polyclonal antibody raised against partial recombinant human KRT20.
Immunogen	Recombinant protein corresponding to human KRT20.
Sequence	ASYLEKVRTLEQSNKLEVQIKQWYETNAPRAGRDYSAYYRQIEELRSQIKDAQLQNARCVLQIDN AKLAA
Host	Rabbit
Reactivity	Human

Form	Liquid
Purification	Antigen affinity purification
Isotype	IgG
Recommend Usage	Immunohistochemistry (Formalin/PFA-fixed paraffin-embedded sections) (1:50-1:200) Western Blot (1:100-1:250) The optimal working dilution should be determined by the end user.
Storage Buffer	In PBS, pH 7.2 (40% glycerol, 0.02% sodium azide).
Storage Instruction	Store at 4°C. For long term storage store at -20°C. Aliquot to avoid repeated freezing and thawing.
Note	This product contains sodium azide: a POISONOUS AND HAZARDOUS SUBSTANCE which should be handled by trained staff only.

Applications

- Western Blot (Cell lysate)

Western Blot analysis of RT-4 cell lysate with KRT20 polyclonal antibody (Cat # PAB31546).

- Immunohistochemistry (Formalin/PFA-fixed paraffin-embedded sections)

Immunohistochemical staining (Formalin-fixed paraffin-embedded sections) of human small intestine with KRT20 polyclonal antibody (Cat # PAB31546) shows distinct cytoplasmic and membranous positivity in glandular cells.

Gene Info — KRT20

Entrez GeneID	54474
Protein Accession#	P35900
Gene Name	KRT20
Gene Alias	CD20, CK20, K20, KRT21, MGC35423
Gene Description	keratin 20
Omim ID	608218
Gene Ontology	Hyperlink

Gene Summary

The protein encoded by this gene is a member of the keratin family. The keratins are intermediate filament proteins responsible for the structural integrity of epithelial cells and are subdivided into cytokeratins and hair keratins. The type I cytokeratins consist of acidic proteins which are arranged in pairs of heterotypic keratin chains. This cytokeratin is a major cellular protein of mature enterocytes and goblet cells and is specifically expressed in the gastric and intestinal mucosa. The type I cytokeratin genes are clustered in a region of chromosome 17q12-q21. [provided by RefSeq]

Other Designations

cytokeratin 20|keratin, type I cytoskeletal 20

Disease

- [Genetic Predisposition to Disease](#)
- [Growth Disorders](#)