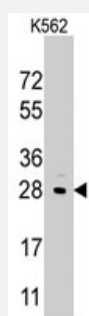


# LIN28B polyclonal antibody

Catalog # PAB3154

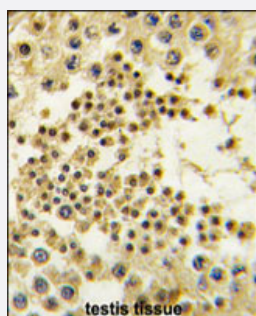
Size 200 uL

## Applications



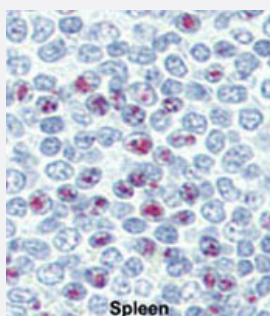
### Western Blot (Cell lysate)

Western blot analysis of LIN28B polyclonal antibody (Cat # PAB3154) in K-562 cell line lysates (35 ug/lane). LIN28B (arrow) was detected using the purified polyclonal antibody.



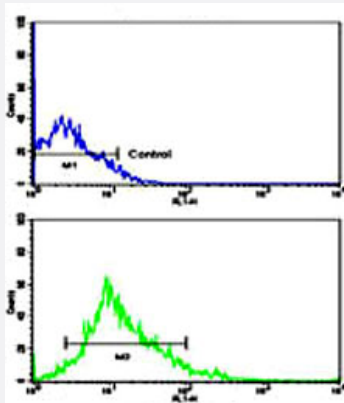
### Immunohistochemistry (Formalin/PFA-fixed paraffin-embedded sections)

Formalin-fixed and paraffin-embedded human testis tissue reacted with LIN28B polyclonal antibody (Cat # PAB3154), which was peroxidase-conjugated to the secondary antibody, followed by DAB staining. This data demonstrates the use of this antibody for immunohistochemistry; clinical relevance has not been evaluated.



### Immunohistochemistry (Formalin/PFA-fixed paraffin-embedded sections)

Formalin-fixed and paraffin-embedded human spleen reacted with LIN28B polyclonal antibody (Cat # PAB3154), which was peroxidase-conjugated to the secondary antibody, followed by AEC staining. This data demonstrates the use of this antibody for immunohistochemistry; clinical relevance has not been evaluated.



## Flow Cytometry

Flow cytometric analysis of HL-60 cells using LIN28B polyclonal antibody (Cat # PAB3154)(bottom histogram) compared to a negative control cell (top histogram).

FITC-conjugated goat-anti-rabbit secondary antibodies were used for the analysis.

## Specification

<b>Product Description</b>	Rabbit polyclonal antibody raised against synthetic peptide of LIN28B.
<b>Immunogen</b>	A synthetic peptide (conjugated with KLH) corresponding to internal region of human LIN28B.
<b>Host</b>	Rabbit
<b>Reactivity</b>	Human
<b>Form</b>	Liquid
<b>Purification</b>	Ammonium sulfate precipitation
<b>Recommend Usage</b>	Western Blot (1:1000) Immunohistochemistry (1:10-50) Flow cytometry (1:10-50) The optimal working dilution should be determined by the end user.
<b>Storage Buffer</b>	In PBS (0.09% sodium azide)
<b>Storage Instruction</b>	Store at 4°C. For long term storage store at -20°C. Aliquot to avoid repeated freezing and thawing.
<b>Note</b>	This product contains sodium azide: a POISONOUS AND HAZARDOUS SUBSTANCE which should be handled by trained staff only.

## Applications

### ● Western Blot (Cell lysate)

Western blot analysis of LIN28B polyclonal antibody (Cat # PAB3154) in K-562 cell line lysates (35 ug/lane). LIN28B (arrow) was detected using the purified polyclonal antibody.

- Immunohistochemistry (Formalin/PFA-fixed paraffin-embedded sections)

Formalin-fixed and paraffin-embedded human testis tissue reacted with LIN28B polyclonal antibody (Cat # PAB3154) , which was peroxidase-conjugated to the secondary antibody, followed by DAB staining. This data demonstrates the use of this antibody for immunohistochemistry; clinical relevance has not been evaluated.

- Immunohistochemistry (Formalin/PFA-fixed paraffin-embedded sections)

Formalin-fixed and paraffin-embedded human spleenreacted with LIN28B polyclonal antibody (Cat # PAB3154), which was peroxidase-conjugated to the secondary antibody, followed by AEC staining.

This data demonstrates the use of this antibody for immunohistochemistry; clinical relevance has not been evaluated.

- Flow Cytometry

Flow cytometric analysis of HL-60 cells using LIN28B polyclonal antibody (Cat # PAB3154)(bottom histogram) compared to a negative control cell (top histogram).

FITC-conjugated goat-anti-rabbit secondary antibodies were used for the analysis.

## Gene Info — LIN28B

**Entrez GeneID** [389421](#)

**Protein Accession#** [NP\\_001004317;Q6ZN17](#)

**Gene Name** LIN28B

**Gene Alias** CSDD2, FLJ16517

**Gene Description** lin-28 homolog B (C. elegans)

**Omim ID** [611044](#)

**Gene Ontology** [Hyperlink](#)

**Other Designations** Lin-28.2|OTTHUMP00000016909|lin-28 homolog B

## Publication Reference

- [Identification and characterization of lin-28 homolog B \(LIN28B\) in human hepatocellular carcinoma.](#)

Guo Y, Chen Y, Ito H, Watanabe A, Ge X, Kodama T, Aburatani H.

Gene 2006 Dec; 384:51.

Application: IF, WB-Ce, WB-Tr, Human, Monkey, COS-7, Hep-3B, Hep-G2, HLE, Huh7, MCF-7 cells, human hepatocellular carcinoma tissues

## Disease

- [Crohn Disease](#)
- [Diabetes Mellitus](#)
- [Genetic Predisposition to Disease](#)
- [Growth Disorders](#)
- [Obesity](#)
- [Prenatal Exposure Delayed Effects](#)
- [Puberty](#)