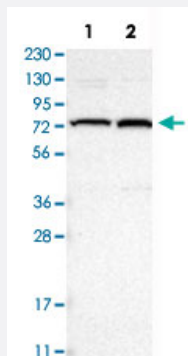


KIFC3 polyclonal antibody

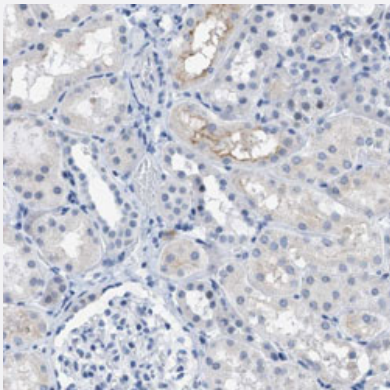
Catalog # PAB31537 Size 100 uL

Applications



Western Blot (Cell lysate)

Western Blot analysis of Lane 1: RT-4 and Lane 2: U-251 MG sp cell lysates with KIFC3 polyclonal antibody (Cat # PAB31537).



Immunohistochemistry (Formalin/PFA-fixed paraffin-embedded sections)

Immunohistochemical staining (Formalin-fixed paraffin-embedded sections) of human kidney with KIFC3 polyclonal antibody (Cat # PAB31537) shows weak cytoplasmic positivity in cells in tubules.

Specification

Product Description	Rabbit polyclonal antibody raised against partial recombinant human KIFC3.
Immunogen	Recombinant protein corresponding to human KIFC3.
Sequence	NIRVIARVRPVTKEGEGPEATNAVTFDADDDSIHLLHKGKPVSFELDKVFPQASQQDVFQEV QALVTSCIDGFNVCIFAYGQT
Host	Rabbit
Reactivity	Human

Form	Liquid
Purification	Antigen affinity purification
Isotype	IgG
Recommend Usage	Immunohistochemistry (Formalin/PFA-fixed paraffin-embedded sections) (1:200-1:500) Western Blot (1:100-1:250) The optimal working dilution should be determined by the end user.
Storage Buffer	In PBS, pH 7.2 (40% glycerol, 0.02% sodium azide).
Storage Instruction	Store at 4°C. For long term storage store at -20°C. Aliquot to avoid repeated freezing and thawing.
Note	This product contains sodium azide: a POISONOUS AND HAZARDOUS SUBSTANCE which should be handled by trained staff only.

Applications

- Western Blot (Cell lysate)

Western Blot analysis of Lane 1: RT-4 and Lane 2: U-251 MG sp cell lysates with KIFC3 polyclonal antibody (Cat # PAB31537).

- Immunohistochemistry (Formalin/PFA-fixed paraffin-embedded sections)

Immunohistochemical staining (Formalin-fixed paraffin-embedded sections) of human kidney with KIFC3 polyclonal antibody (Cat # PAB31537) shows weak cytoplasmic positivity in cells in tubules.

Gene Info — KIFC3

Entrez GeneID	3801
Protein Accession#	Q9BVG8
Gene Name	KIFC3
Gene Alias	DKFZp686D23201, FLJ34694
Gene Description	kinesin family member C3
Omim ID	604535
Gene Ontology	Hyperlink

Gene Summary

KIFC3 belongs to the large superfamily of kinesins, molecular motors that use the energy of ATP hydrolysis to translocate cargoes along microtubules. Members share extensive homology within a globular domain containing the microtubule- and ATP-binding sites and have a coiled-coil stalk domain that mediates oligomerization. Different kinesin family members participate in specific and diverse motile processes, such as cell division, organelle transport, and nuclear movement (Hoang et al., 1998 [PubMed 9782090]).[supplied by OMIM]

Other Designations

-

Disease

- [Cardiovascular Diseases](#)
- [Diabetes Mellitus](#)
- [Edema](#)