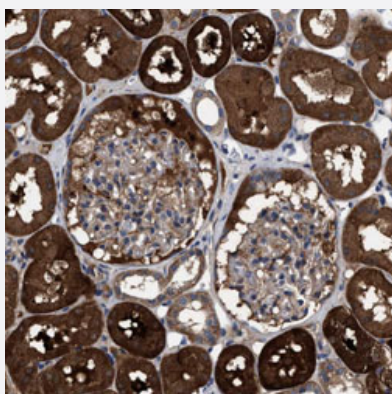


C9orf103 polyclonal antibody

Catalog # PAB31536 Size 100 uL

Applications



Immunohistochemistry (Formalin/PFA-fixed paraffin-embedded sections)

Immunohistochemical staining (Formalin-fixed paraffin-embedded sections) of human kidney with C9orf103 polyclonal antibody (Cat # PAB31536) shows strong cytoplasmic positivity in cells in tubules.

Specification

Product Description	Rabbit polyclonal antibody raised against partial recombinant human C9orf103.
Immunogen	Recombinant protein corresponding to human C9orf103.
Sequence	LLVMGVSGSGKSTVGALLASELGWKFYDADDYHPEENRRKMGKGIPLNDQDRIPWLCNLHDILLR DVASGQRVVLACSALKKTYR
Host	Rabbit
Reactivity	Human
Form	Liquid
Purification	Antigen affinity purification
Isotype	IgG
Recommend Usage	Immunohistochemistry (Formalin/PFA-fixed paraffin-embedded sections) (1:50-1:200) The optimal working dilution should be determined by the end user.
Storage Buffer	In PBS, pH 7.2 (40% glycerol, 0.02% sodium azide).

Storage Instruction

Store at 4°C. For long term storage store at -20°C.
Aliquot to avoid repeated freezing and thawing.

Note

This product contains sodium azide: a POISONOUS AND HAZARDOUS SUBSTANCE which should be handled by trained staff only.

Applications

- Immunohistochemistry (Formalin/PFA-fixed paraffin-embedded sections)

Immunohistochemical staining (Formalin-fixed paraffin-embedded sections) of human kidney with C9orf103 polyclonal antibody (Cat # PAB31536) shows strong cytoplasmic positivity in cells in tubules.

Gene Info — C9orf103

Entrez GeneID [414328](#)

Protein Accession# [Q5T6J7](#)

Gene Name C9orf103

Gene Alias bA522l20.2

Gene Description chromosome 9 open reading frame 103

Omim ID [611343](#)

Gene Ontology [Hyperlink](#)

Other Designations OTTHUMP00000021546|OTTHUMP00000021547|glucokinase-like protein|glucokinase-like protein