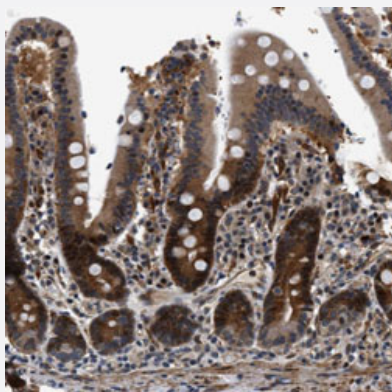


# LARP6 polyclonal antibody

Catalog # PAB31535      Size 100 uL

## Applications



### Immunohistochemistry (Formalin/PFA-fixed paraffin-embedded sections)

Immunohistochemical staining (Formalin-fixed paraffin-embedded sections) of human duodenum with LARP6 polyclonal antibody (Cat # PAB31535) shows strong cytoplasmic positivity in glandular cells.

## Specification

Product Description	Rabbit polyclonal antibody raised against partial recombinant human LARP6.
Immunogen	Recombinant protein corresponding to human LARP6.
Sequence	PLFPNENLPSKMLLVYDLYLSPKLWALATPQKNQGRVQEKVMEHLLKLFGTGFISSVRILKPGREL PPDIRRISSRYSQVGTQECAMEFEEVEAAIKAHEFMITESQ
Host	Rabbit
Reactivity	Human
Form	Liquid
Purification	Antigen affinity purification
Isotype	IgG
Recommend Usage	Immunohistochemistry (Formalin/PFA-fixed paraffin-embedded sections) (1:200-1:500) The optimal working dilution should be determined by the end user.
Storage Buffer	In PBS, pH 7.2 (40% glycerol, 0.02% sodium azide).

**Storage Instruction**

Store at 4°C. For long term storage store at -20°C.  
Aliquot to avoid repeated freezing and thawing.

**Note**

This product contains sodium azide: a POISONOUS AND HAZARDOUS SUBSTANCE which should be handled by trained staff only.

## Applications

- Immunohistochemistry (Formalin/PFA-fixed paraffin-embedded sections)

Immunohistochemical staining (Formalin-fixed paraffin-embedded sections) of human duodenum with LARP6 polyclonal antibody (Cat # PAB31535) shows strong cytoplasmic positivity in glandular cells.

## Gene Info — LARP6

**Entrez GeneID**[55323](#)**Protein Accession#**[Q9BRS8](#)**Gene Name**

LARP6

**Gene Alias**

ACHN, FLJ11196

**Gene Description**

La ribonucleoprotein domain family, member 6

**Omim ID**[611300](#)**Gene Ontology**[Hyperlink](#)**Gene Summary**

O

**Other Designations**

acheron|death-associated LA motif protein