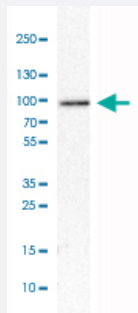


RINT1 polyclonal antibody

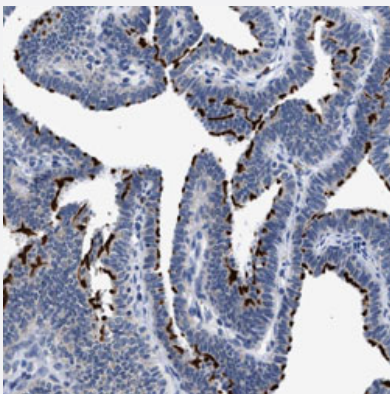
Catalog # PAB31533 Size 100 uL

Applications



Western Blot (Cell lysate)

Western Blot analysis of U-251 MG cell lysate with RINT1 polyclonal antibody (Cat # PAB31533).



Immunohistochemistry (Formalin/PFA-fixed paraffin-embedded sections)

Immunohistochemical staining (Formalin-fixed paraffin-embedded sections) of human fallopian tube with RINT1 polyclonal antibody (Cat # PAB31533) shows strong membranous positivity in ciliated glandular cells.

Specification

Product Description	Rabbit polyclonal antibody raised against partial recombinant human RINT1.
Immunogen	Recombinant protein corresponding to human RINT1.
Sequence	PCCSESGDERKNLEEKSDINVTVLIGSKQVSEGTDNGDLPSYVSFIEKEVGNDLKSLKKLDKLE QRTVSKMQLEEQLVTISSEIPKRIRSALKNAEESKQFLNQFLEQETHLFS
Host	Rabbit
Reactivity	Human

Form	Liquid
Purification	Antigen affinity purification
Isotype	IgG
Recommend Usage	Immunohistochemistry (Formalin/PFA-fixed paraffin-embedded sections) (1:20-1:50) Western Blot (1:100-1:250) The optimal working dilution should be determined by the end user.
Storage Buffer	In PBS, pH 7.2 (40% glycerol, 0.02% sodium azide).
Storage Instruction	Store at 4°C. For long term storage store at -20°C. Aliquot to avoid repeated freezing and thawing.
Note	This product contains sodium azide: a POISONOUS AND HAZARDOUS SUBSTANCE which should be handled by trained staff only.

Applications

- Western Blot (Cell lysate)

Western Blot analysis of U-251 MG cell lysate with RINT1 polyclonal antibody (Cat # PAB31533).

- Immunohistochemistry (Formalin/PFA-fixed paraffin-embedded sections)

Immunohistochemical staining (Formalin-fixed paraffin-embedded sections) of human fallopian tube with RINT1 polyclonal antibody (Cat # PAB31533) shows strong membranous positivity in ciliated glandular cells.

Gene Info — RINT1

Entrez GeneID	60561
Protein Accession#	Q6NUQ1
Gene Name	RINT1
Gene Alias	DKFZp667H2324, RINT-1
Gene Description	RAD50 interactor 1
Omim ID	610089
Gene Ontology	Hyperlink
Other Designations	Rad50-interacting protein 1