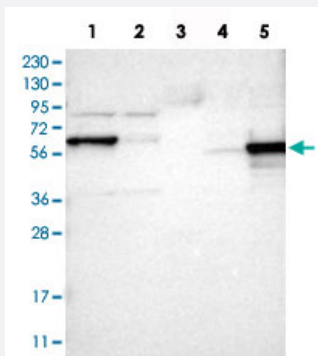


# ICA1 polyclonal antibody

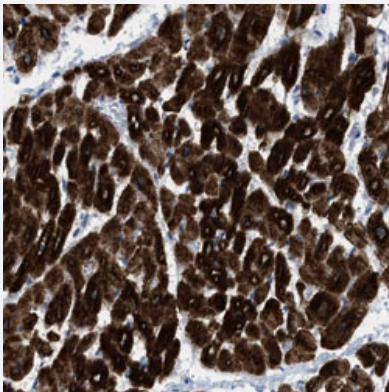
Catalog # PAB31522      Size 100 uL

## Applications



### Western Blot

Western Blot analysis of Lane 1: RT-4 cell, Lane 2: U-251 MG sp cell, Lane 3: human plasma tissue (IgG/HSA depleted), Lane 4: human liver tissue and Lane 5: human tonsil tissue lysates with ICA1 polyclonal antibody (Cat # PAB31522).



### Immunohistochemistry (Formalin/PFA-fixed paraffin-embedded sections)

Immunohistochemical staining (Formalin-fixed paraffin-embedded sections) of human heart muscle with ICA1 polyclonal antibody (Cat # PAB31522) shows strong cytoplasmic positivity in myocytes.

## Specification

Product Description	Rabbit polyclonal antibody raised against partial recombinant human ICA1.
Immunogen	Recombinant protein corresponding to human ICA1.
Sequence	DELLDMKSEEGACLGPVAGTPEPEGADKDDLLLLSEIFNASSLEEGEFSKEWAAVFGDGQVKE PVPTMALGEPDPKAQTGSGFLPSQLLDQNMKDLQASLQEPAKAASDLTAWFSLFADLDPLSNP DAVGKTDKEHELL
Host	Rabbit
Reactivity	Human

Form	Liquid
Purification	Antigen affinity purification
Isotype	IgG
Recommend Usage	Immunohistochemistry (Formalin/PFA-fixed paraffin-embedded sections) (1:200-1:500) Western Blot (1:100-1:250) The optimal working dilution should be determined by the end user.
Storage Buffer	In PBS, pH 7.2 (40% glycerol, 0.02% sodium azide).
Storage Instruction	Store at 4°C. For long term storage store at -20°C. Aliquot to avoid repeated freezing and thawing.
Note	This product contains sodium azide: a POISONOUS AND HAZARDOUS SUBSTANCE which should be handled by trained staff only.

## Applications

- Western Blot

Western Blot analysis of Lane 1: RT-4 cell, Lane 2: U-251 MG sp cell, Lane 3: human plasma tissue (IgG/HSA depleted), Lane 4: human liver tissue and Lane 5: human tonsil tissue lysates with ICA1 polyclonal antibody (Cat # PAB31522).

- Immunohistochemistry (Formalin/PFA-fixed paraffin-embedded sections)

Immunohistochemical staining (Formalin-fixed paraffin-embedded sections) of human heart muscle with ICA1 polyclonal antibody (Cat # PAB31522) shows strong cytoplasmic positivity in myocytes.

## Gene Info — ICA1

Entrez GeneID	<a href="#">3382</a>
Protein Accession#	<a href="#">Q05084</a>
Gene Name	ICA1
Gene Alias	ICA69, ICAp69
Gene Description	islet cell autoantigen 1, 69kDa
Omim ID	<a href="#">147625</a>
Gene Ontology	<a href="#">Hyperlink</a>

**Gene Summary**

This gene encodes a protein with an arfaptin homology domain that is found both in the cytosol and as membrane-bound form on the Golgi complex and immature secretory granules. This protein is believed to be an autoantigen in insulin-dependent diabetes mellitus and primary Sjogren's syndrome. Alternatively spliced variants which encode different protein isoforms have been described; however, not all variants have been fully characterized. [provided by RefSeq]

**Other Designations**

diabetes mellitus type I autoantigen|islet cell autoantigen 1|islet cell autoantigen 1 (69kD)|islet cell autoantigen 1 isoform|islet cell autoantigen p69

**Publication Reference**

- [Immunofluorescence and fluorescent-protein tagging show high correlation for protein localization in mammalian cells.](#)

Charlotte Stadler, Elton Rexhepaj, Vasanth R Singan, Robert F Murphy, Rainer Pepperkok, Mathias Uhlén, Jeremy C Simpson, Emma Lundberg.

Nature Methods 2013 Apr; 10(4):315.

**Pathway**

- [Type I diabetes mellitus](#)

**Disease**

- [Genetic Predisposition to Disease](#)
- [Tobacco Use Disorder](#)
- [Vitiligo](#)