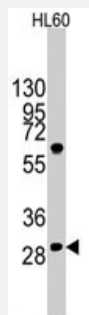


LIN28B polyclonal antibody

Catalog # PAB3152

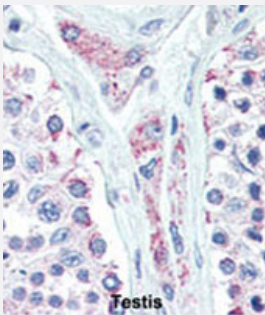
Size 400 uL

Applications



Western Blot (Cell lysate)

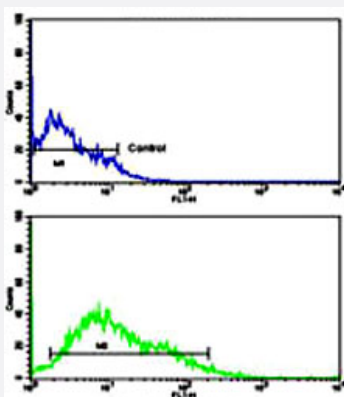
Western blot analysis of LIN28B polyclonal antibody (Cat # PAB3152) in HL-60 cell line lysates (35 ug/lane). LIN28B (arrow) was detected using the purified polyclonal antibody.



Immunohistochemistry (Formalin/PFA-fixed paraffin-embedded sections)

Formalin-fixed and paraffin-embedded human testis reacted with LIN28B polyclonal antibody (Cat # PAB3152), which was peroxidase-conjugated to the secondary antibody, followed by AEC staining.

This data demonstrates the use of this antibody for immunohistochemistry; clinical relevance has not been evaluated.



Flow Cytometry

Flow cytometric analysis of HL-60 cells using LIN28B polyclonal antibody (Cat # PAB3152) (bottom histogram) compared to a negative control cell (top histogram).

FITC-conjugated goat-anti-rabbit secondary antibodies were used for the analysis.

Specification

Product Description

Rabbit polyclonal antibody raised against synthetic peptide of LIN28B.

Immunogen	A synthetic peptide (conjugated with KLH) corresponding to N-terminus of human LIN28B.
Host	Rabbit
Reactivity	Human
Form	Liquid
Purification	Protein A purification
Recommend Usage	Western Blot (1:1000) Immunohistochemistry (1:10-50) Flow cytometry (1:10-50) The optimal working dilution should be determined by the end user.
Storage Buffer	In PBS (0.09% sodium azide)
Storage Instruction	Store at 4°C. For long term storage store at -20°C. Aliquot to avoid repeated freezing and thawing.
Note	This product contains sodium azide: a POISONOUS AND HAZARDOUS SUBSTANCE which should be handled by trained staff only.

Applications

- Western Blot (Cell lysate)

Western blot analysis of LIN28B polyclonal antibody (Cat # PAB3152) in HL-60 cell line lysates (35 ug/lane). LIN28B (arrow) was detected using the purified polyclonal antibody.

- Immunohistochemistry (Formalin/PFA-fixed paraffin-embedded sections)

Formalin-fixed and paraffin-embedded human testis reacted with LIN28B polyclonal antibody (Cat # PAB3152), which was peroxidase-conjugated to the secondary antibody, followed by AEC staining.

This data demonstrates the use of this antibody for immunohistochemistry; clinical relevance has not been evaluated.

- Flow Cytometry

Flow cytometric analysis of HL-60 cells using LIN28B polyclonal antibody (Cat # PAB3152)(bottom histogram) compared to a negative control cell (top histogram).

FITC-conjugated goat-anti-rabbit secondary antibodies were used for the analysis.

Gene Info — LIN28B

Entrez GeneID

[389421](#)

Protein Accession#

[NP_001004317;Q6ZN17](#)

Gene Name	LIN28B
Gene Alias	CSDD2, FLJ16517
Gene Description	lin-28 homolog B (C. elegans)
Omim ID	611044
Gene Ontology	Hyperlink
Other Designations	Lin-28.2 OTTHUMP00000016909 lin-28 homolog B

Publication Reference

- [Identification and characterization of lin-28 homolog B \(LIN28B\) in human hepatocellular carcinoma.](#)

Guo Y, Chen Y, Ito H, Watanabe A, Ge X, Kodama T, Aburatani H.

Gene 2006 Dec; 384:51.

Application: IF, WB-Ce, WB-Tr, Human, Monkey, COS-7, Hep-3B, Hep-G2, HLE, Huh7, MCF-7 cells, human hepatocellular carcinoma tissues

Disease

- [Crohn Disease](#)
- [Diabetes Mellitus](#)
- [Genetic Predisposition to Disease](#)
- [Growth Disorders](#)
- [Obesity](#)
- [Prenatal Exposure Delayed Effects](#)
- [Puberty](#)