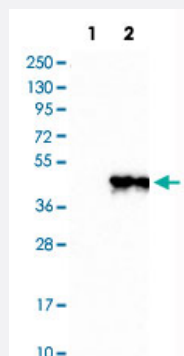


# NAPG polyclonal antibody

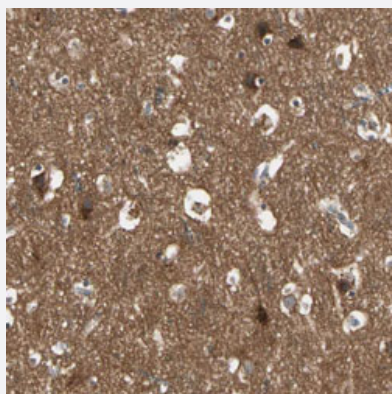
Catalog # PAB31516      Size 100 uL

## Applications



### Western Blot (Transfected lysate)

Western Blot analysis of Lane 1: negative control (vector only transfected HEK293T cell lysate) and Lane 2: over-expression lysate (co-expressed with a C-terminal myc-DDK tag in mammalian HEK293T cells) with NAPG polyclonal antibody (Cat # PAB31516).



### Immunohistochemistry (Formalin/PFA-fixed paraffin-embedded sections)

Immunohistochemical staining (Formalin-fixed paraffin-embedded sections) of human cerebral cortex with NAPG polyclonal antibody (Cat # PAB31516) shows cytoplasmic positivity in neuronal cells and neuropil.

## Specification

Product Description	Rabbit polyclonal antibody raised against partial recombinant human NAPG.
Immunogen	Recombinant protein corresponding to human NAPG.
Sequence	RGRRFDEAALSIQKEKNYKEIENYPTCYKKTIAQVLVHLHRNDYVAAERCVRESYSIPGFNGSEDC AALEQLLEGYDQQDQDQVSDVCNSPLFKYMDNDYAKLGLSLVVPGGGIKKKSPATPQAKPDGV TATAA
Host	Rabbit
Reactivity	Human

Form	Liquid
Purification	Antigen affinity purification
Isotype	IgG
Recommend Usage	Immunohistochemistry (Formalin/PFA-fixed paraffin-embedded sections) (1:50-1:200) Western Blot (1:100-1:250) The optimal working dilution should be determined by the end user.
Storage Buffer	In PBS, pH 7.2 (40% glycerol, 0.02% sodium azide).
Storage Instruction	Store at 4°C. For long term storage store at -20°C. Aliquot to avoid repeated freezing and thawing.
Note	This product contains sodium azide: a POISONOUS AND HAZARDOUS SUBSTANCE which should be handled by trained staff only.

## Applications

- Western Blot (Transfected lysate)

Western Blot analysis of Lane 1: negative control (vector only transfected HEK293T cell lysate) and Lane 2: over-expression lysate (co-expressed with a C-terminal myc-DDK tag in mammalian HEK293T cells) with NAPG polyclonal antibody (Cat # PAB31516).

- Immunohistochemistry (Formalin/PFA-fixed paraffin-embedded sections)

Immunohistochemical staining (Formalin-fixed paraffin-embedded sections) of human cerebral cortex with NAPG polyclonal antibody (Cat # PAB31516) shows cytoplasmic positivity in neuronal cells and neuropil.

## Gene Info — NAPG

Entrez GeneID	<a href="#">8774</a>
Protein Accession#	<a href="#">Q99747</a>
Gene Name	NAPG
Gene Alias	GAMMASNAP
Gene Description	N-ethylmaleimide-sensitive factor attachment protein, gamma
Omim ID	<a href="#">603216</a>
Gene Ontology	<a href="#">Hyperlink</a>

**Gene Summary**

This gene encodes soluble NSF attachment protein gamma. The soluble NSF attachment proteins (SNAPs) enable N-ethyl-maleimide-sensitive fusion protein (NSF) to bind to target membranes. NSF and SNAPs appear to be general components of the intracellular membrane fusion apparatus, and their action at specific sites of fusion must be controlled by SNAP receptors particular to the membranes being fused. The product of this gene mediates platelet exocytosis and controls the membrane fusion events of this process

**Other Designations**

gamma SNAP|soluble NSF attachment protein

**Disease**

- [Bipolar Disorder](#)
- [Genetic Predisposition to Disease](#)