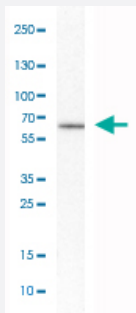


# CECR1 polyclonal antibody

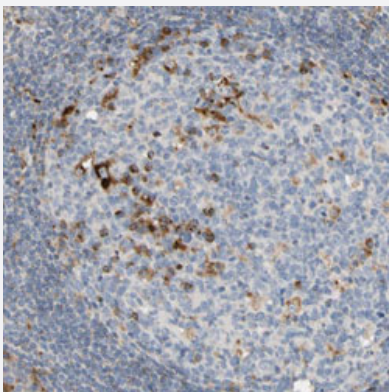
Catalog # PAB31514      Size 100 uL

## Applications



### Western Blot (Cell lysate)

Western Blot analysis of MOLT-4 cell lysate with CECR1 polyclonal antibody (Cat # PAB31514).



### Immunohistochemistry (Formalin/PFA-fixed paraffin-embedded sections)

Immunohistochemical staining (Formalin-fixed paraffin-embedded sections) of human tonsil with CECR1 polyclonal antibody (Cat # PAB31514) shows strong cytoplasmic positivity in germinal center cells.

## Specification

<b>Product Description</b>	Rabbit polyclonal antibody raised against partial recombinant human CECR1.
<b>Immunogen</b>	Recombinant protein corresponding to human CECR1.
<b>Sequence</b>	TDWQGTSIDRNILDALMLNTRIGHGFALSKHPAVRTYSWKKDIPIEVCPISNQVLKLVSDLRNHPV ATLMATGHPMVISDDPAMFGAKGLSYDFYEVFMGIGGMKADLRTLKQLAMNSIKYSTLLESEKNT FMEIWKKRWDK
<b>Host</b>	Rabbit
<b>Reactivity</b>	Human

Form	Liquid
Purification	Antigen affinity purification
Isotype	IgG
Recommend Usage	Immunohistochemistry (Formalin/PFA-fixed paraffin-embedded sections) (1:50-1:200) Western Blot (1:250-1:500) The optimal working dilution should be determined by the end user.
Storage Buffer	In PBS, pH 7.2 (40% glycerol, 0.02% sodium azide).
Storage Instruction	Store at 4°C. For long term storage store at -20°C. Aliquot to avoid repeated freezing and thawing.
Note	This product contains sodium azide: a POISONOUS AND HAZARDOUS SUBSTANCE which should be handled by trained staff only.

## Applications

- Western Blot (Cell lysate)

Western Blot analysis of MOLT-4 cell lysate with CECR1 polyclonal antibody (Cat # PAB31514).

- Immunohistochemistry (Formalin/PFA-fixed paraffin-embedded sections)

Immunohistochemical staining (Formalin-fixed paraffin-embedded sections) of human tonsil with CECR1 polyclonal antibody (Cat # PAB31514) shows strong cytoplasmic positivity in germinal center cells.

## Gene Info — CECR1

Entrez GeneID	<a href="#">51816</a>
Protein Accession#	<a href="#">Q9NZK5</a>
Gene Name	CECR1
Gene Alias	ADGF, IDGFL
Gene Description	cat eye syndrome chromosome region, candidate 1
Omim ID	<a href="#">607575</a>
Gene Ontology	<a href="#">Hyperlink</a>

**Gene Summary**

This gene encodes a member of a subfamily of the adenosine deaminase protein family. The encoded protein may act as a growth factor and have adenosine deaminase activity. It may be responsible for some of the phenotypic features associated with cat eye syndrome. Two transcript variants encoding distinct isoforms have been identified for this gene. [provided by RefSeq]

**Other Designations**

OTTHUMP00000028854|OTTHUMP00000196142|cat eye syndrome critical region protein 1

**Disease**

- [Tobacco Use Disorder](#)