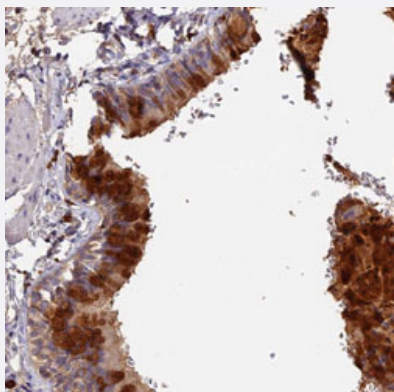


# GPR133 polyclonal antibody

Catalog # PAB31490

Size 100 uL

## Applications



### Immunohistochemistry (Formalin/PFA-fixed paraffin-embedded sections)

Immunohistochemical staining (Formalin-fixed paraffin-embedded sections) of human bronchus with GPR133 polyclonal antibody (Cat # PAB31490) shows strong cytoplasmic positivity in respiratory epithelial cells with distinct extracellular material.

## Specification

Product Description	Rabbit polyclonal antibody raised against partial recombinant human GPR133.
Immunogen	Recombinant protein corresponding to human GPR133.
Sequence	NSEVRAAFKHKTKVWSLTSSSARTSNAKPFHSDLMNGTRPGMASTKLSPWDKSSSHSAHRVDLS AV
Host	Rabbit
Reactivity	Human
Form	Liquid
Purification	Antigen affinity purification
Isotype	IgG
Recommend Usage	Immunohistochemistry (Formalin/PFA-fixed paraffin-embedded sections) (1:200-1:500) The optimal working dilution should be determined by the end user.
Storage Buffer	In PBS, pH 7.2 (40% glycerol, 0.02% sodium azide).

**Storage Instruction**

Store at 4°C. For long term storage store at -20°C.  
Aliquot to avoid repeated freezing and thawing.

**Note**

This product contains sodium azide: a POISONOUS AND HAZARDOUS SUBSTANCE which should be handled by trained staff only.

## Applications

- Immunohistochemistry (Formalin/PFA-fixed paraffin-embedded sections)

Immunohistochemical staining (Formalin-fixed paraffin-embedded sections) of human bronchus with GPR133 polyclonal antibody (Cat # PAB31490) shows strong cytoplasmic positivity in respiratory epithelial cells with distinct extracellular material.

## Gene Info — GPR133

**Entrez GeneID**[283383](#)**Protein Accession#**[Q6QNK2](#)**Gene Name**

GPR133

**Gene Alias**

DKFZp434B1272, FLJ16770, MGC138512, MGC138514, PGR25

**Gene Description**

G protein-coupled receptor 133

**Gene Ontology**[Hyperlink](#)**Other Designations**

-

## Disease

- [Tobacco Use Disorder](#)