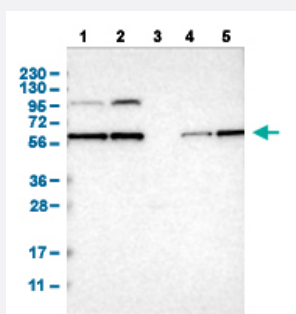


PPM1B polyclonal antibody

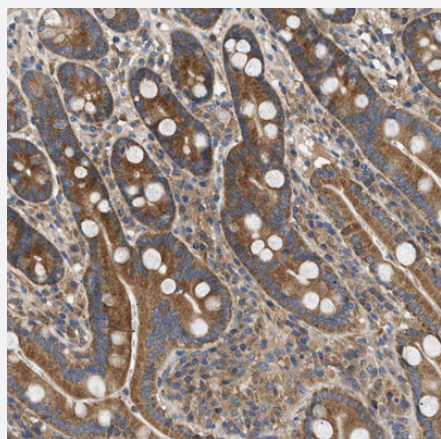
Catalog # PAB31485 Size 100 uL

Applications



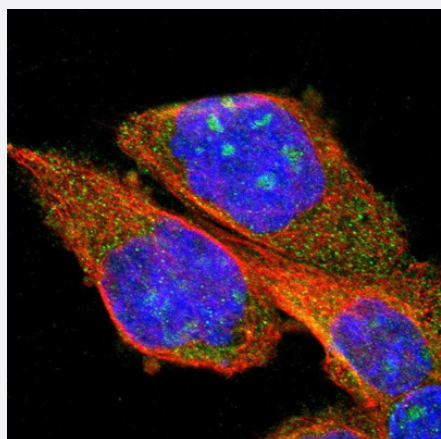
Western Blot

Western Blot analysis of (1) human cell line RT-4 (2) human cell line U-251MG sp (3) human plasma (IgG/HSA depleted) (4) human liver tissue, and (5) human tonsil tissue.



Immunohistochemistry (Formalin/PFA-fixed paraffin-embedded sections)

Immunohistochemical staining (Formalin-fixed paraffin-embedded sections) of human duodenum shows cytoplasmic positivity in glandular cells.



Immunofluorescence

Immunofluorescent staining of human cell line A-431 shows positivity in nucleoli & cytoplasm. Antibody staining is shown in green.

Specification

Product Description	Rabbit polyclonal antibody raised against partial recombinant human PPM1B.
Immunogen	Recombinant protein corresponding to amino acids 359-463 of human PPM1B.
Sequence	KRNVIEAVYSRLNPHRES DGASDEAEESGSQGKLVEALRQMRINHRGN YRQLLEEMLT SYRLAKV EGEESPAEPAATATSSNSDAGNPVTMQESHTESESGLAEL
Host	Rabbit
Reactivity	Human
Form	Liquid
Purification	Antigen affinity purification
Isotype	IgG
Recommend Usage	Immunofluorescence (1-4 ug/mL) Immunohistochemistry (Formalin/PFA-fixed paraffin-embedded sections) (1:20-1:50) Western Blot (1:100-1:250) The optimal working dilution should be determined by the end user.
Storage Buffer	In PBS, pH 7.2 (40% glycerol, 0.02% sodium azide).
Storage Instruction	Store at 4°C for short term storage. For long term storage store at -20°C. Aliquot to avoid repeated freezing and thawing.
Note	This product contains sodium azide: a POISONOUS AND HAZARDOUS SUBSTANCE which should be handled by trained staff only.

Applications

- Western Blot

Western Blot analysis of (1) human cell line RT-4 (2) human cell line U-251MG sp (3) human plasma (IgG/HSA depleted) (4) human liver tissue, and (5) human tonsil tissue.

- Immunohistochemistry (Formalin/PFA-fixed paraffin-embedded sections)

Immunohistochemical staining (Formalin-fixed paraffin-embedded sections) of human duodenum shows cytoplasmic positivity in glandular cells.

- Immunofluorescence

Immunofluorescent staining of human cell line A-431 shows positivity in nucleoli & cytoplasm. Antibody staining is shown in green.

Gene Info — PPM1B

Entrez GeneID	5495
Protein Accession#	O75688
Gene Name	PPM1B
Gene Alias	MGC21657, PP2C-beta-X, PP2CB, PP2CBETA, PPC2BETAX
Gene Description	protein phosphatase 1B (formerly 2C), magnesium-dependent, beta isoform
Omim ID	603770
Gene Ontology	Hyperlink
Gene Summary	<p>The protein encoded by this gene is a member of the PP2C family of Ser/Thr protein phosphatases. PP2C family members are known to be negative regulators of cell stress response pathways. This phosphatase has been shown to dephosphorylate cyclin-dependent kinases (CDKs), and thus may be involved in cell cycle control. Overexpression of this phosphatase is reported to cause cell-growth arrest or cell death. Alternative splicing results in multiple transcript variants encoding different isoforms. Additional transcript variants have been described, but currently do not represent full-length sequences. [provided by RefSeq]</p>
Other Designations	OTTHUMP00000158953 OTTHUMP00000158955 protein phosphatase 1B protein phosphatase 2C beta isoform protein phosphatase 2C-like protein

Pathway

- [MAPK signaling pathway](#)

Disease

- [Tobacco Use Disorder](#)