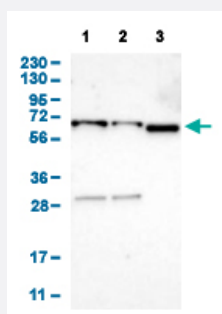


EIF2AK1 polyclonal antibody

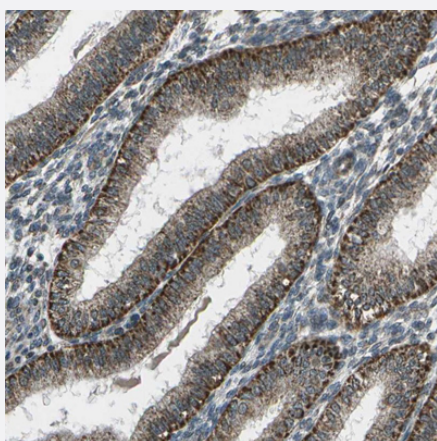
Catalog # PAB31481 Size 100 uL

Applications



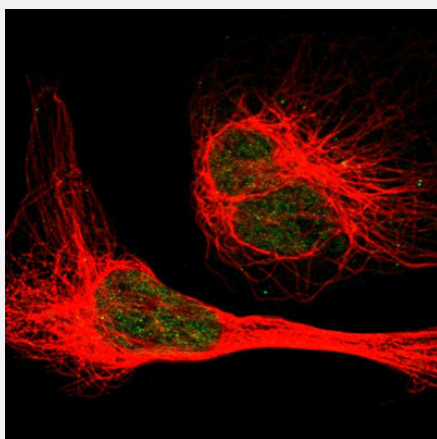
Western Blot

Western Blot analysis of (1) human cell line RT-4 (2) human cell line U-251MG sp, and (3) human plasma (IgG/HSA depleted).



Immunohistochemistry (Formalin/PFA-fixed paraffin-embedded sections)

Immunohistochemical staining (Formalin-fixed paraffin-embedded sections) of human uterine corpus shows strong cytoplasmic positivity in glandular cells.



Immunofluorescence

Immunofluorescent staining of human cell line U-2 OS shows localization to nucleoplasm. Antibody staining is shown in green.

Specification

| | |
|----------------------------|--|
| Product Description | Rabbit polyclonal antibody raised against partial recombinant human EIF2AK1. |
| Immunogen | Recombinant protein corresponding to amino acids 34-180 of human EIF2AK1. |
| Sequence | PDPEYDESDVPAEIQVLKEPLQQPTFPFAVANQLLLVSLLEHLSHVHEPNPLRSRQVFKLLCQTFI KMGLLSSFTCSDEFSSRLHHNRAITHLMRSAKERVVRQDPCEDISRIQKIRSREVALEAQTSTRYLN EFEELAILGKGGYGR |
| Host | Rabbit |
| Reactivity | Human |
| Form | Liquid |
| Purification | Antigen affinity purification |
| Isotype | IgG |
| Recommend Usage | Immunofluorescence (1-4 ug/mL) Immunohistochemistry (Formalin/PFA-fixed paraffin-embedded sections) (1:20-1:50) Western Blot (1:100-1:250) The optimal working dilution should be determined by the end user. |
| Storage Buffer | In PBS, pH 7.2 (40% glycerol, 0.02% sodium azide). |
| Storage Instruction | Store at 4°C for short term storage. For long term storage store at -20°C. Aliquot to avoid repeated freezing and thawing. |
| Note | This product contains sodium azide: a POISONOUS AND HAZARDOUS SUBSTANCE which should be handled by trained staff only. |

Applications

- Western Blot

Western Blot analysis of (1) human cell line RT-4 (2) human cell line U-251MG sp, and (3) human plasma (IgG/HSA depleted).

- Immunohistochemistry (Formalin/PFA-fixed paraffin-embedded sections)

Immunohistochemical staining (Formalin-fixed paraffin-embedded sections) of human uterine corpus shows strong cytoplasmic positivity in glandular cells.

- Immunofluorescence

Immunofluorescent staining of human cell line U-2 OS shows localization to nucleoplasm. Antibody staining is shown in green.

Gene Info — EIF2AK1

Entrez GeneID [27102](#)**Protein Accession#** [Q9BQ3](#)**Gene Name** EIF2AK1**Gene Alias** HCR, HRI, KIAA1369**Gene Description** eukaryotic translation initiation factor 2-alpha kinase 1**Gene Ontology** [Hyperlink](#)

Gene Summary The protein encoded by this gene acts at the level of translation initiation to downregulate protein synthesis in response to stress. The encoded protein is a kinase that can be inactivated by hemin . Two transcript variants encoding different isoforms have been found for this gene. [provided by RefSeq]

Other Designations heme regulated initiation factor 2 alpha kinase|heme sensitive initiation factor 2a kinase|heme-regulated inhibitor|heme-regulated initiation factor 2-alpha kinase|heme-regulated repressor

Disease

- [Cerebral Hemorrhage](#)
- [Genetic Predisposition to Disease](#)
- [Hypertension](#)
- [Intracranial Hemorrhages](#)
- [Kidney Failure](#)
- [Stroke](#)
- [Subarachnoid Hemorrhage](#)