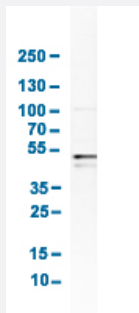


# BAG5 polyclonal antibody

Catalog # PAB31480

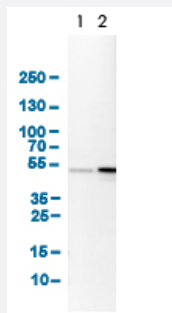
Size 100 uL

## Applications



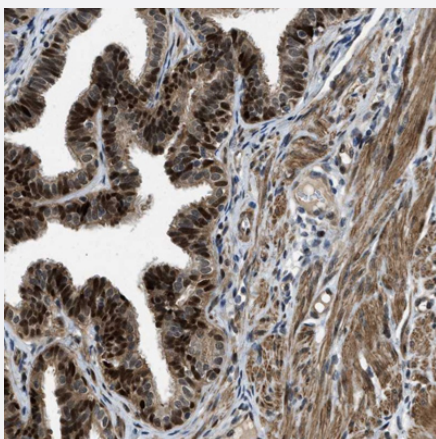
### Western Blot (Cell lysate)

Western Blot analysis of human cell line Daudi.



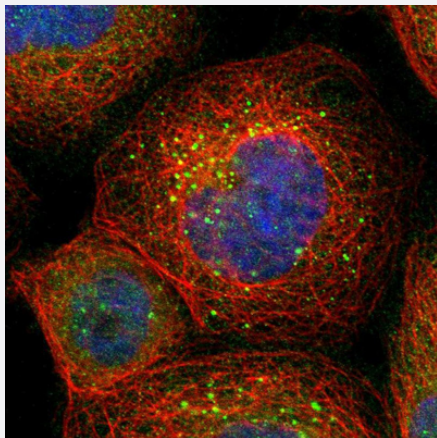
### Western Blot

Western Blot analysis of (1) NIH-3T3 cell lysate (Mouse embryonic fibroblast cells), and (2) NBT-II cell lysate (Rat Wistar bladder tumour cells).



### Immunohistochemistry (Formalin/PFA-fixed paraffin-embedded sections)

Immunohistochemical staining (Formalin-fixed paraffin-embedded sections) of human fallopian tube shows cytoplasmic and nuclear positivity in glandular cells.



## Immunofluorescence

Immunofluorescent staining of human cell line A-431 shows localization to vesicles. Antibody staining is shown in green.

## Specification

<b>Product Description</b>	Rabbit polyclonal antibody raised against partial recombinant human BAG5.
<b>Immunogen</b>	Recombinant protein corresponding to amino acids 249-399 of human BAG5.
<b>Sequence</b>	INKLLKYLDLEEEADTTKAFDLRQNHSLKIEKVLKRMREIKNELLQAQNPSELYLSSKTELQGLIGQL DEVSLKNPCIREARRRAVIEVQTLITYIDLKEALEKRKLFACEEHPHSHKAVWNVLGNLSEIQGEVL SFDGNRTDKNYIRLE
<b>Host</b>	Rabbit
<b>Reactivity</b>	Human, Mouse, Rat
<b>Form</b>	Liquid
<b>Purification</b>	Antigen affinity purification
<b>Isotype</b>	IgG
<b>Recommend Usage</b>	Immunofluorescence (1-4 ug/mL) Immunohistochemistry (Formalin/PFA-fixed paraffin-embedded sections) (1:50-1:200) Western Blot (1:100-1:250) The optimal working dilution should be determined by the end user.
<b>Storage Buffer</b>	In PBS, pH 7.2 (40% glycerol, 0.02% sodium azide).
<b>Storage Instruction</b>	Store at 4°C for short term storage. For long term storage store at -20°C. Aliquot to avoid repeated freezing and thawing.
<b>Note</b>	This product contains sodium azide: a POISONOUS AND HAZARDOUS SUBSTANCE which should be handled by trained staff only.

## Applications

- Western Blot (Cell lysate)

Western Blot analysis of human cell line Daudi.

- Western Blot

Western Blot analysis of (1) NIH-3T3 cell lysate (Mouse embryonic fibroblast cells), and (2) NBT-II cell lysate (Rat Wistar bladder tumour cells).

- Immunohistochemistry (Formalin/PFA-fixed paraffin-embedded sections)

Immunohistochemical staining (Formalin-fixed paraffin-embedded sections) of human fallopian tube shows cytoplasmic and nuclear positivity in glandular cells.

- Immunofluorescence

Immunofluorescent staining of human cell line A-431 shows localization to vesicles. Antibody staining is shown in green.

## Gene Info — BAG5

Entrez GeneID	<a href="#">9529</a>
Protein Accession#	<a href="#">Q9UL15</a>
Gene Name	BAG5
Gene Alias	BAG-5
Gene Description	BCL2-associated athanogene 5
Omim ID	<a href="#">603885</a>
Gene Ontology	<a href="#">Hyperlink</a>
Gene Summary	The protein encoded by this gene is a member of the BAG1-related protein family. BAG1 is an anti-apoptotic protein that functions through interactions with a variety of cell apoptosis and growth related proteins including BCL-2, Raf-protein kinase, steroid hormone receptors, growth factor receptors and members of the heat shock protein 70 kDa family. This protein contains a BAG domain near the C-terminus, which could bind and inhibit the chaperone activity of Hsc70/Hsp70. Three transcript variants encoding two different isoforms have been found for this gene. [provided by RefSeq]
Other Designations	BAG-family molecular chaperone regulator-5

## Disease

- [Cardiovascular Diseases](#)
- [Diabetes Mellitus](#)
- [Edema](#)
- [Head and Neck Neoplasms](#)
- [Neoplasm Recurrence](#)
- [Neoplasms](#)