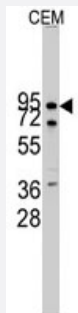


CDH10 polyclonal antibody

Catalog # PAB3148

Size 400 uL

Applications



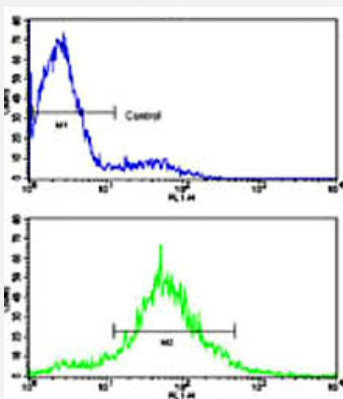
Western Blot (Cell lysate)

Western blot analysis of CDH10 polyclonal antibody (Cat # PAB3148) in CEM cell line lysates (35 ug/lane). CDH10 (arrow) was detected using the purified polyclonal antibody.



Immunohistochemistry (Formalin/PFA-fixed paraffin-embedded sections)

Formalin-fixed and paraffin-embedded human brain tissue reacted with CDH10 polyclonal antibody (Cat # PAB3148), which was peroxidase-conjugated to the secondary antibody, followed by DAB staining. This data demonstrates the use of this antibody for immunohistochemistry; clinical relevance has not been evaluated.



Flow Cytometry

Flow cytometric analysis of CEM cells using CDH10 polyclonal antibody (Cat # PAB3148)(bottom histogram) compared to a negative control cell (top histogram).

FITC-conjugated goat-anti-rabbit secondary antibodies were used for the analysis.

Specification

Product Description

Rabbit polyclonal antibody raised against synthetic peptide of CDH10.

Immunogen	A synthetic peptide (conjugated with KLH) corresponding to N-terminus of human CDH10.
Host	Rabbit
Reactivity	Human
Form	Liquid
Purification	Ammonium sulfate precipitation
Recommend Usage	Western Blot (1:1000) Immunohistochemistry (1:10-50) The optimal working dilution should be determined by the end user.
Storage Buffer	In PBS (0.09% sodium azide)
Storage Instruction	Store at 4°C. For long term storage store at -20°C. Aliquot to avoid repeated freezing and thawing.
Note	This product contains sodium azide: a POISONOUS AND HAZARDOUS SUBSTANCE which should be handled by trained staff only.

Applications

- Western Blot (Cell lysate)

Western blot analysis of CDH10 polyclonal antibody (Cat # PAB3148) in CEM cell line lysates (35 ug/lane). CDH10 (arrow) was detected using the purified polyclonal antibody.

- Immunohistochemistry (Formalin/PFA-fixed paraffin-embedded sections)

Formalin-fixed and paraffin-embedded human brain tissue reacted with CDH10 polyclonal antibody (Cat # PAB3148) , which was peroxidase-conjugated to the secondary antibody, followed by DAB staining. This data demonstrates the use of this antibody for immunohistochemistry; clinical relevance has not been evaluated.

- Flow Cytometry

Flow cytometric analysis of CEM cells using CDH10 polyclonal antibody (Cat # PAB3148)(bottom histogram) compared to a negative control cell (top histogram).

FITC-conjugated goat-anti-rabbit secondary antibodies were used for the analysis.

Gene Info — CDH10

Entrez GeneID	1008
Protein Accession#	NP_006718:Q9Y6N8
Gene Name	CDH10

Gene Alias	-
Gene Description	cadherin 10, type 2 (T2-cadherin)
Omim ID	604555
Gene Ontology	Hyperlink
Gene Summary	<p>This gene encodes a type II classical cadherin from the cadherin superfamily, integral membrane proteins that mediate calcium-dependent cell-cell adhesion. Mature cadherin proteins are composed of a large N-terminal extracellular domain, a single membrane-spanning domain, and a small, highly conserved C-terminal cytoplasmic domain. The extracellular domain consists of 5 subdomains, each containing a cadherin motif, and appears to determine the specificity of the protein's homophilic cell adhesion activity. Type II (atypical) cadherins are defined based on their lack of a HA V cell adhesion recognition sequence specific to type I cadherins. This particular cadherin is predominantly expressed in brain and is putatively involved in synaptic adhesions, axon outgrowth and guidance. [provided by RefSeq]</p>
Other Designations	T2-cadherin cadherin 10, type 2 cadherin-10

Publication Reference

- [The human cadherin-10 gene: complete coding sequence, predominant expression in the brain, and mapping on chromosome 5p13-14.](#)

Kools P, Vanhalst K, Van den Eynde E, van Roy F.

FEBS Letters 1999 Jun; 452(3):328.

Disease

- [Autistic Disorder](#)
- [Genetic Predisposition to Disease](#)
- [Tobacco Use Disorder](#)