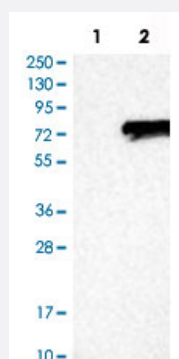


# LGI2 polyclonal antibody

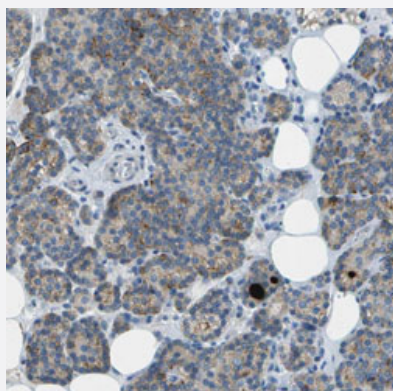
Catalog # PAB31471      Size 100 uL

## Applications



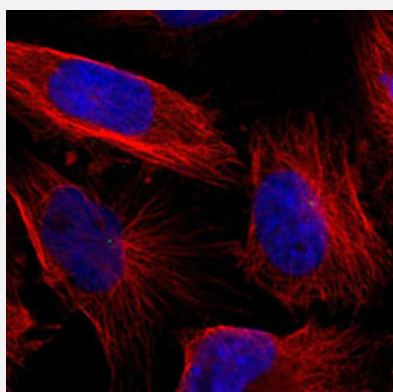
### Western Blot (Transfected lysate)

Western Blot analysis of Lane 1: negative control (vector only transfected HEK293T cell lysate) and Lane 2: over-expression lysate (co-expressed with a C-terminal myc-DDK tag in mammalian HEK293T cells) with LGI2 polyclonal antibody (Cat # PAB31471).



### Immunohistochemistry (Formalin/PFA-fixed paraffin-embedded sections)

Immunohistochemical staining (Formalin-fixed paraffin-embedded sections) of human parathyroid gland with LGI2 polyclonal antibody (Cat # PAB31471) shows moderate cytoplasmic positivity in glandular cells.



### Immunofluorescence

Immunofluorescent staining of U-251 MG cells with LGI2 polyclonal antibody (Cat # PAB31471) (Green) shows localization to centrosome.

## Specification

<b>Product Description</b>	Rabbit polyclonal antibody raised against partial recombinant human LGI2.
<b>Immunogen</b>	Recombinant protein corresponding to human LGI2.
<b>Sequence</b>	DLTHLSLANNHIKALPRDVFSDLDSLIELDLRGKFECDCKAKWLYLWLKMTNSTVSDVLCIGPPE YQEKKLNDVTSFDYECTTTDFVHQTLPTYQSVSVDTFNSKNDVYVAIAQPSMENCMVLEW
<b>Host</b>	Rabbit
<b>Reactivity</b>	Human
<b>Form</b>	Liquid
<b>Purification</b>	Antigen affinity purification
<b>Isotype</b>	IgG
<b>Recommend Usage</b>	Immunofluorescence (1-4 ug/mL) Immunohistochemistry (Formalin/PFA-fixed paraffin-embedded sections) (1:20-1:50) Western Blot (1:100-1:250) The optimal working dilution should be determined by the end user.
<b>Storage Buffer</b>	In PBS, pH 7.2 (40% glycerol, 0.02% sodium azide).
<b>Storage Instruction</b>	Store at 4°C. For long term storage store at -20°C. Aliquot to avoid repeated freezing and thawing.
<b>Note</b>	This product contains sodium azide: a POISONOUS AND HAZARDOUS SUBSTANCE which should be handled by trained staff only.

## Applications

- Western Blot (Transfected lysate)

Western Blot analysis of Lane 1: negative control (vector only transfected HEK293T cell lysate) and Lane 2: over-expression lysate (co-expressed with a C-terminal myc-DDK tag in mammalian HEK293T cells) with LGI2 polyclonal antibody (Cat # PAB31471).

- Immunohistochemistry (Formalin/PFA-fixed paraffin-embedded sections)

Immunohistochemical staining (Formalin-fixed paraffin-embedded sections) of human parathyroid gland with LGI2 polyclonal antibody (Cat # PAB31471) shows moderate cytoplasmic positivity in glandular cells.

- Immunofluorescence

Immunofluorescent staining of U-251 MG cells with LGI2 polyclonal antibody (Cat # PAB31471) (Green) shows localization to centrosome.

## Gene Info — LGI2

**Entrez GeneID** [55203](#)**Protein Accession#** [Q8NOV4](#)**Gene Name** LGI2**Gene Alias** FLJ10675, KIAA1916, LGIL2, MGC126808, MGC126810**Gene Description** leucine-rich repeat LGI family, member 2**Omim ID** [608301](#)**Gene Ontology** [Hyperlink](#)**Gene Summary** O**Other Designations** LGI1-like protein 2|OTTHUMP00000123374|leucine-rich, glioma inactivated 2