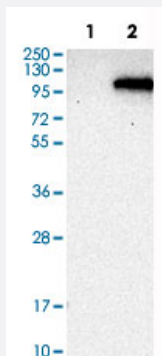


PDE6A polyclonal antibody

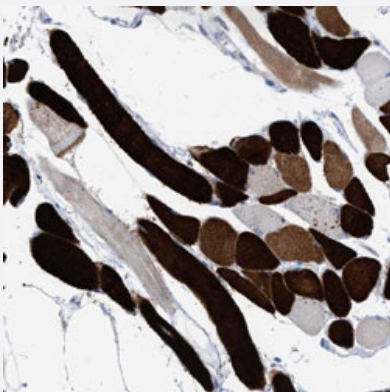
Catalog # PAB31469 Size 100 uL

Applications



Western Blot (Transfected lysate)

Western Blot analysis of Lane 1: negative control (vector only transfected HEK293T cell lysate) and Lane 2: over-expression lysate (co-expressed with a C-terminal myc-DDK tag in mammalian HEK293T cells) with PDE6A polyclonal antibody (Cat # PAB31469).



Immunohistochemistry (Formalin/PFA-fixed paraffin-embedded sections)

Immunohistochemical staining (Formalin-fixed paraffin-embedded sections) of human skeletal muscle with PDE6A polyclonal antibody (Cat # PAB31469) shows strong cytoplasmic positivity in myocytes.

Specification

Product Description	Rabbit polyclonal antibody raised against partial recombinant human PDE6A.
Immunogen	Recombinant protein corresponding to human PDE6A.
Sequence	<p>TLMESLTQFLGWSVLNPDITYESMNKLENRKDIFQDIVKYHVKCDNEEIQKILKTREYVGKEPWECE</p> <p>EEELAEILQAELPDADKYEINKFHFSDLPLTELELVKCGIQMYELKVVDKFHIPQEALVRFMYSLS</p> <p>KGYRKITYHN</p>
Host	Rabbit
Reactivity	Human

Form	Liquid
Purification	Antigen affinity purification
Isotype	IgG
Recommend Usage	Immunohistochemistry (Formalin/PFA-fixed paraffin-embedded sections) (1:20-1:50) Western Blot (1:100-1:250) The optimal working dilution should be determined by the end user.
Storage Buffer	In PBS, pH 7.2 (40% glycerol, 0.02% sodium azide).
Storage Instruction	Store at 4°C. For long term storage store at -20°C. Aliquot to avoid repeated freezing and thawing.
Note	This product contains sodium azide: a POISONOUS AND HAZARDOUS SUBSTANCE which should be handled by trained staff only.

Applications

- Western Blot (Transfected lysate)

Western Blot analysis of Lane 1: negative control (vector only transfected HEK293T cell lysate) and Lane 2: over-expression lysate (co-expressed with a C-terminal myc-DDK tag in mammalian HEK293T cells) with PDE6A polyclonal antibody (Cat # PAB31469).

- Immunohistochemistry (Formalin/PFA-fixed paraffin-embedded sections)

Immunohistochemical staining (Formalin-fixed paraffin-embedded sections) of human skeletal muscle with PDE6A polyclonal antibody (Cat # PAB31469) shows strong cytoplasmic positivity in myocytes.

Gene Info — PDE6A

Entrez GeneID	5145
Protein Accession#	P16499
Gene Name	PDE6A
Gene Alias	CGPR-A, PDEA
Gene Description	phosphodiesterase 6A, cGMP-specific, rod, alpha
Omim ID	180071
Gene Ontology	Hyperlink

Gene Summary

This gene encodes the cyclic-GMP (cGMP)-specific phosphodiesterase 6A alpha subunit, expressed in cells of the retinal rod outer segment. The phosphodiesterase 6 holoenzyme is a heterotrimer composed of an alpha, beta, and two gamma subunits. cGMP is an important regulator of rod cell membrane current, and its dynamic concentration is established by phosphodiesterase 6A cGMP hydrolysis and guanylate cyclase cGMP synthesis. The protein is a subunit of a key phototransduction enzyme and participates in processes of transmission and amplification of the visual signal. Mutations in this gene have been identified as one cause of autosomal recessive retinitis pigmentosa. [provided by RefSeq]

Other Designations

cGMP phosphodiesterase alpha subunit|phosphodiesterase 6A, alpha subunit|rod cGMP-specific 3',5'-cyclic phosphodiesterase subunit alpha|rod photoreceptor cGMP phosphodiesterase alpha subunit

Publication Reference

- [Scalable in situ hybridization on tissue arrays for validation of novel cancer and tissue-specific biomarkers.](#)

Kiflemariam S, Andersson S, Asplund A, Pontén F, Sjöblom T.

PLoS One 2012 Mar; 7(3):e32927.

Application: IHC-P, Human, Human tissue microarray

Disease

- [Cardiovascular Diseases](#)
- [Depressive Disorder](#)
- [Diabetes Mellitus](#)
- [Edema](#)
- [Glaucoma](#)
- [Retinal Diseases](#)
- [Retinitis Pigmentosa](#)