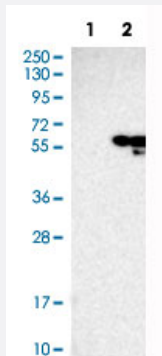


COPS2 polyclonal antibody

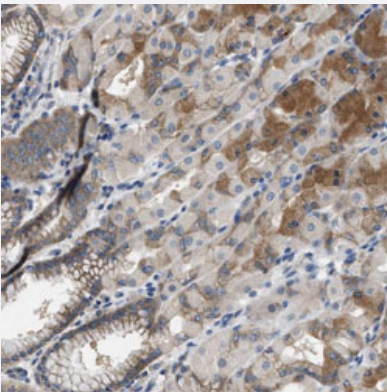
Catalog # PAB31466 Size 100 uL

Applications



Western Blot (Transfected lysate)

Western Blot analysis of Lane 1: negative control (vector only transfected HEK293T cell lysate) and Lane 2: over-expression lysate (co-expressed with a C-terminal myc-DDK tag in mammalian HEK293T cells) with COPS2 polyclonal antibody (Cat # PAB31466).



Immunohistochemistry (Formalin/PFA-fixed paraffin-embedded sections)

Immunohistochemical staining (Formalin-fixed paraffin-embedded sections) of human stomach with COPS2 polyclonal antibody (Cat # PAB31466) shows cytoplasmic positivity in glandular cells.

Specification

Product Description	Rabbit polyclonal antibody raised against partial recombinant human COPS2.
Immunogen	Recombinant protein corresponding to human COPS2.
Sequence	KSAIPHPLIMGVIRECGGKMHLREGFEKAHTDFFEAFKNYDESGSPRRTTCLKYLVLANMLMKS GINPFDSQEAKPYKNDPEILAMT
Host	Rabbit
Reactivity	Human

Form	Liquid
Purification	Antigen affinity purification
Isotype	IgG
Recommend Usage	Immunohistochemistry (Formalin/PFA-fixed paraffin-embedded sections) (1:20-1:50) Western Blot (1:100-1:250) The optimal working dilution should be determined by the end user.
Storage Buffer	In PBS, pH 7.2 (40% glycerol, 0.02% sodium azide).
Storage Instruction	Store at 4°C. For long term storage store at -20°C. Aliquot to avoid repeated freezing and thawing.
Note	This product contains sodium azide: a POISONOUS AND HAZARDOUS SUBSTANCE which should be handled by trained staff only.

Applications

- Western Blot (Transfected lysate)

Western Blot analysis of Lane 1: negative control (vector only transfected HEK293T cell lysate) and Lane 2: over-expression lysate (co-expressed with a C-terminal myc-DDK tag in mammalian HEK293T cells) with COPS2 polyclonal antibody (Cat # PAB31466).

- Immunohistochemistry (Formalin/PFA-fixed paraffin-embedded sections)

Immunohistochemical staining (Formalin-fixed paraffin-embedded sections) of human stomach with COPS2 polyclonal antibody (Cat # PAB31466) shows cytoplasmic positivity in glandular cells.

Gene Info — COPS2

Entrez GeneID	9318
Protein Accession#	P61201
Gene Name	COPS2
Gene Alias	ALIEN, CSN2, SGN2, TRIP15
Gene Description	COP9 constitutive photomorphogenic homolog subunit 2 (Arabidopsis)
Omim ID	604508
Gene Ontology	Hyperlink

Other Designations

COP9 constitutive photomorphogenic homolog subunit 2|COP9 signalosome complex subunit 2|JAB1-containing signalosome subunit 2|thyroid receptor interacting protein 15

Publication Reference

- [Immunofluorescence and fluorescent-protein tagging show high correlation for protein localization in mammalian cells.](#)

Charlotte Stadler, Elton Rexhepaj, Vasanth R Singan, Robert F Murphy, Rainer Pepperkok, Mathias Uhlén, Jeremy C Simpson, Emma Lundberg.

Nature Methods 2013 Apr; 10(4):315.