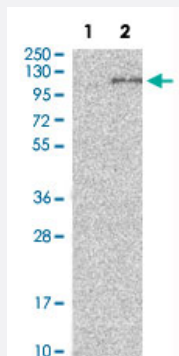


ADAM15 polyclonal antibody

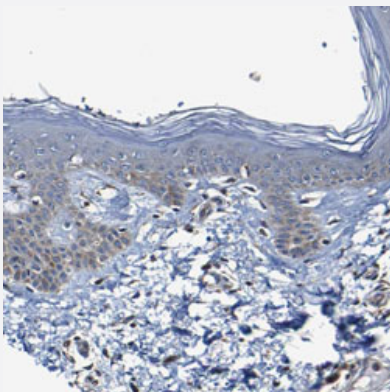
Catalog # PAB31429 Size 100 uL

Applications



Western Blot (Transfected lysate)

Western Blot analysis of Lane 1: negative control (vector only transfected HEK293T cell lysate) and Lane 2: over-expression lysate (co-expressed with a C-terminal myc-DDK tag in mammalian HEK293T cells) with ADAM15 polyclonal antibody (Cat # PAB31429).



Immunohistochemistry (Formalin/PFA-fixed paraffin-embedded sections)

Immunohistochemical staining (Formalin-fixed paraffin-embedded sections) of human skin with ADAM15 polyclonal antibody (Cat # PAB31429) shows cytoplasmic positivity in basal cells.

Specification

Product Description	Rabbit polyclonal antibody raised against partial recombinant human ADAM15.
Immunogen	Recombinant protein corresponding to human ADAM15.
Sequence	CQSLWGPGAQPAAPLCLQTANTRGNAFGSCGRNPSGSYVSCTPRDAICGQLQCQTGRTQPLLGSIRDLLWETIDVNGTELNCWSVHLDLGSDVAQPLLTLPGTACGPGGLVCIDHRCQRVDLLGAQECSKC
Host	Rabbit
Reactivity	Human

Form	Liquid
Purification	Antigen affinity purification
Isotype	IgG
Recommend Usage	Immunohistochemistry (Formalin/PFA-fixed paraffin-embedded sections) (1:20-1:50) Western Blot (1:100-1:250) The optimal working dilution should be determined by the end user.
Storage Buffer	In PBS, pH 7.2 (40% glycerol, 0.02% sodium azide).
Storage Instruction	Store at 4°C. For long term storage store at -20°C. Aliquot to avoid repeated freezing and thawing.
Note	This product contains sodium azide: a POISONOUS AND HAZARDOUS SUBSTANCE which should be handled by trained staff only.

Applications

- Western Blot (Transfected lysate)

Western Blot analysis of Lane 1: negative control (vector only transfected HEK293T cell lysate) and Lane 2: over-expression lysate (co-expressed with a C-terminal myc-DDK tag in mammalian HEK293T cells) with ADAM15 polyclonal antibody (Cat # PAB31429).

- Immunohistochemistry (Formalin/PFA-fixed paraffin-embedded sections)

Immunohistochemical staining (Formalin-fixed paraffin-embedded sections) of human skin with ADAM15 polyclonal antibody (Cat # PAB31429) shows cytoplasmic positivity in basal cells.

Gene Info — ADAM15

Entrez GeneID	8751
Protein Accession#	Q13444
Gene Name	ADAM15
Gene Alias	MDC15
Gene Description	ADAM metallopeptidase domain 15
Omim ID	605548
Gene Ontology	Hyperlink

Gene Summary

The protein encoded by this gene is a member of the ADAM (a disintegrin and metalloproteinase) protein family. ADAM family members are type I transmembrane glycoproteins known to be involved in cell adhesion and proteolytic ectodomain processing of cytokines and adhesion molecules. This protein contains multiple functional domains including a zinc-binding metalloprotease domain, a disintegrin-like domain, as well as a EGF-like domain. Through its disintegrin-like domain, this protein specifically interacts with the integrin beta chain, beta 3. It also interacts with Src family protein-tyrosine kinases in a phosphorylation-dependent manner, suggesting that this protein may function in cell-cell adhesion as well as in cellular signaling. Multiple alternatively spliced transcript variants encoding distinct isoforms have been observed. [provided by RefSeq]

Other Designations

OTTHUMP00000015780|a disintegrin and metalloproteinase domain 15|a disintegrin and metalloproteinase domain 15 (metargidin)|metalloprotease RGD disintegrin protein|metalloproteinase-like, disintegrin-like, and cysteine-rich protein 15|metargidin

Disease

- [Dominance](#)
- [Schizophrenia](#)