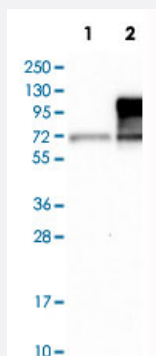


SIGLEC9 polyclonal antibody

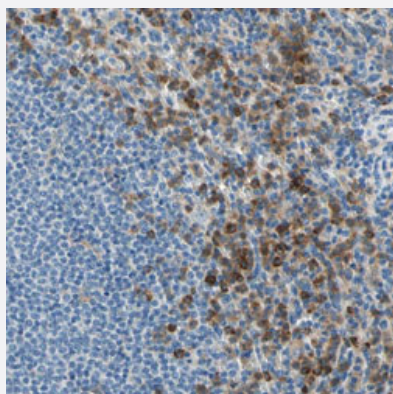
Catalog # PAB31422 Size 100 uL

Applications



Western Blot (Transfected lysate)

Western Blot analysis of Lane 1: negative control (vector only transfected HEK293T cell lysate) and Lane 2: over-expression lysate (co-expressed with a C-terminal myc-DDK tag in mammalian HEK293T cells) with SIGLEC9 polyclonal antibody (Cat # PAB31422).



Immunohistochemistry (Formalin/PFA-fixed paraffin-embedded sections)

Immunohistochemical staining (Formalin-fixed paraffin-embedded sections) of human spleen with SIGLEC9 polyclonal antibody (Cat # PAB31422) shows strong cytoplasmic positivity in cells in red pulp.

Specification

Product Description	Rabbit polyclonal antibody raised against partial recombinant human SIGLEC9.
Immunogen	Recombinant protein corresponding to human SIGLEC9.
Sequence	QNLTMTVFQGDGTSTVLGNGSSLSLPEGQSLRLVCAVDAVDSNPPARLSLSWRGLTLCPSQP SNPGVLELPWWHLRDEAEFTCRAQNPLGSQQVYLNVSLSQSKATSGVTQ
Host	Rabbit
Reactivity	Human

Form	Liquid
Purification	Antigen affinity purification
Isotype	IgG
Recommend Usage	Immunohistochemistry (Formalin/PFA-fixed paraffin-embedded sections) (1:20-1:50) Western Blot (1:100-1:250) The optimal working dilution should be determined by the end user.
Storage Buffer	In PBS, pH 7.2 (40% glycerol, 0.02% sodium azide).
Storage Instruction	Store at 4°C. For long term storage store at -20°C. Aliquot to avoid repeated freezing and thawing.
Note	This product contains sodium azide: a POISONOUS AND HAZARDOUS SUBSTANCE which should be handled by trained staff only.

Applications

- Western Blot (Transfected lysate)

Western Blot analysis of Lane 1: negative control (vector only transfected HEK293T cell lysate) and Lane 2: over-expression lysate (co-expressed with a C-terminal myc-DDK tag in mammalian HEK293T cells) with SIGLEC9 polyclonal antibody (Cat # PAB31422).

- Immunohistochemistry (Formalin/PFA-fixed paraffin-embedded sections)

Immunohistochemical staining (Formalin-fixed paraffin-embedded sections) of human spleen with SIGLEC9 polyclonal antibody (Cat # PAB31422) shows strong cytoplasmic positivity in cells in red pulp.

Gene Info — SIGLEC9

Entrez GeneID	27180
Protein Accession#	Q9Y336
Gene Name	SIGLEC9
Gene Alias	CD329, CDw329, OBBP-LIKE
Gene Description	sialic acid binding Ig-like lectin 9
Omim ID	605640
Gene Ontology	Hyperlink
Other Designations	OB binding protein-like