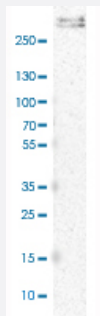


# COL6A3 polyclonal antibody

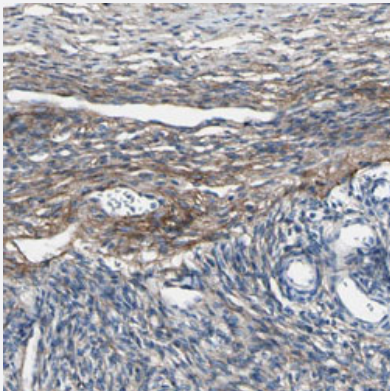
Catalog # PAB31418      Size 100 uL

## Applications



### Western Blot (Cell lysate)

Western Blot analysis of U-87 MG cell lysate with COL6A3 polyclonal antibody (Cat # PAB31418).



### Immunohistochemistry (Formalin/PFA-fixed paraffin-embedded sections)

Immunohistochemical staining (Formalin-fixed paraffin-embedded sections) of human ovary with COL6A3 polyclonal antibody (Cat # PAB31418) shows moderate cytoplasmic positivity in ovarian stromal cells.

## Specification

<b>Product Description</b>	Rabbit polyclonal antibody raised against partial recombinant human COL6A3.
<b>Immunogen</b>	Recombinant protein corresponding to human COL6A3.
<b>Sequence</b>	PRDLKIVLMLTGEVPEQQLEEAQRVILQAKCKGYFFVVLGIGRKVNIKEVYTFASEPNDVFFKLVD KSTELNEEPLMRFGRLPSFVSSENAFYLSPIRKQCDWFQGDQPTKNLVKFGHKQVNPNNVT SSPTSNPVTTTKPVT
<b>Host</b>	Rabbit
<b>Reactivity</b>	Human

Form	Liquid
Purification	Antigen affinity purification
Isotype	IgG
Recommend Usage	Immunohistochemistry (Formalin/PFA-fixed paraffin-embedded sections) (1:50-1:200) Western Blot (1:100-1:250) The optimal working dilution should be determined by the end user.
Storage Buffer	In PBS, pH 7.2 (40% glycerol, 0.02% sodium azide).
Storage Instruction	Store at 4°C. For long term storage store at -20°C. Aliquot to avoid repeated freezing and thawing.
Note	This product contains sodium azide: a POISONOUS AND HAZARDOUS SUBSTANCE which should be handled by trained staff only.

## Applications

- Western Blot (Cell lysate)

Western Blot analysis of U-87 MG cell lysate with COL6A3 polyclonal antibody (Cat # PAB31418).

- Immunohistochemistry (Formalin/PFA-fixed paraffin-embedded sections)

Immunohistochemical staining (Formalin-fixed paraffin-embedded sections) of human ovary with COL6A3 polyclonal antibody (Cat # PAB31418) shows moderate cytoplasmic positivity in ovarian stromal cells.

## Gene Info — COL6A3

Entrez GeneID	<a href="#">1293</a>
Protein Accession#	<a href="#">P12111</a>
Gene Name	COL6A3
Gene Alias	DKFZp686D23123, DKFZp686K04147, DKFZp686N0262, FLJ34702, FLJ98399
Gene Description	collagen, type VI, alpha 3
Omim ID	<a href="#">120250</a> <a href="#">158810</a> <a href="#">254090</a>
Gene Ontology	<a href="#">Hyperlink</a>

**Gene Summary**

This gene encodes the alpha-3 chain, one of the three alpha chains of type VI collagen, a beaded filament collagen found in most connective tissues. The alpha-3 chain of type VI collagen is much larger than the alpha-1 and -2 chains. This difference in size is largely due to an increase in the number of subdomains, similar to von Willebrand Factor type A domains, that are found in the amino terminal globular domain of all the alpha chains. These domains have been shown to bind extracellular matrix proteins, an interaction that explains the importance of this collagen in organizing matrix components. Mutations in the type VI collagen genes are associated with Bethlem myopathy, a rare autosomal dominant proximal myopathy with early childhood onset. Mutations in this gene are also a cause of Ullrich congenital muscular dystrophy, also referred to as Ullrich scleroatonic muscular dystrophy, an autosomal recessive congenital myopathy that is more severe than Bethlem myopathy. Multiple transcript variants have been identified, but the full-length nature of only some of these variants has been described. [provided by RefSeq]

**Other Designations**

alpha 3 type VI collagen|collagen VI, alpha-3 polypeptide

**Pathway**

- [ECM-receptor interaction](#)
- [Focal adhesion](#)

**Disease**

- [Cerebral Hemorrhage](#)
- [Genetic Predisposition to Disease](#)
- [Hypertension](#)
- [Intracranial Hemorrhages](#)
- [Stroke](#)
- [Subarachnoid Hemorrhage](#)
- [Tobacco Use Disorder](#)