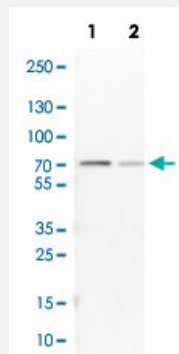


ANXA6 polyclonal antibody

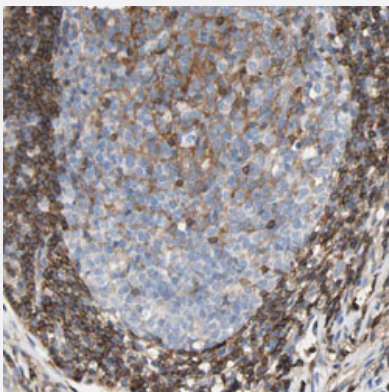
Catalog # PAB31417 Size 100 uL

Applications



Western Blot (Cell lysate)

Western Blot analysis of Lane 1: NIH-3T3 cell lysate (mouse embryonic fibroblast cells) and Lane 2: NBT-II cell lysate (Wistar rat bladder tumour cells) with ANXA6 polyclonal antibody (Cat # PAB31417).



Immunohistochemistry (Formalin/PFA-fixed paraffin-embedded sections)

Immunohistochemical staining (Formalin-fixed paraffin-embedded sections) of human appendix with ANXA6 polyclonal antibody (Cat # PAB31417) shows cytoplasmic positivity in lymphoid tissue.

Specification

Product Description	Rabbit polyclonal antibody raised against partial recombinant human ANXA6.
Immunogen	Recombinant protein corresponding to human ANXA6.
Sequence	IADTPSGDKTSLETRFMILCTRSYPHLRRVFQEFIKMTNYDVEHTIKKEMSGDVRDAFVAIVQSVK NKPLFFADKLYKSMKGAGTDEKTLTRIMVSRSEIDLLNIRREFIEKYDKSLHQAIEGDTSGDFLKALL ALCGGED
Host	Rabbit
Reactivity	Human, Mouse, Rat

Form	Liquid
Purification	Antigen affinity purification
Isotype	IgG
Recommend Usage	Immunohistochemistry (Formalin/PFA-fixed paraffin-embedded sections) (1:50-1:200) Western Blot (1:100-1:250) The optimal working dilution should be determined by the end user.
Storage Buffer	In PBS, pH 7.2 (40% glycerol, 0.02% sodium azide).
Storage Instruction	Store at 4°C. For long term storage store at -20°C. Aliquot to avoid repeated freezing and thawing.
Note	This product contains sodium azide: a POISONOUS AND HAZARDOUS SUBSTANCE which should be handled by trained staff only.

Applications

- Western Blot (Cell lysate)

Western Blot analysis of Lane 1: NIH-3T3 cell lysate (mouse embryonic fibroblast cells) and Lane 2: NBT-II cell lysate (Wistar rat bladder tumour cells) with ANXA6 polyclonal antibody (Cat # PAB31417).

- Immunohistochemistry (Formalin/PFA-fixed paraffin-embedded sections)

Immunohistochemical staining (Formalin-fixed paraffin-embedded sections) of human appendix with ANXA6 polyclonal antibody (Cat # PAB31417) shows cytoplasmic positivity in lymphoid tissue.

Gene Info — ANXA6

Entrez GeneID	309
Protein Accession#	P08133
Gene Name	ANXA6
Gene Alias	ANX6, CBP68
Gene Description	annexin A6
Omim ID	114070
Gene Ontology	Hyperlink

Gene Summary

Annexin VI belongs to a family of calcium-dependent membrane and phospholipid binding proteins. Although their functions are still not clearly defined, several members of the annexin family have been implicated in membrane-related events along exocytotic and endocytotic pathways. The annexin VI gene is approximately 60 kbp long and contains 26 exons. It encodes a protein of about 68 kDa that consists of eight 68-amino acid repeats separated by linking sequences of variable lengths. It is highly similar to human annexins I and II sequences, each of which contain four such repeats. Exon 21 of annexin VI is alternatively spliced, giving rise to two isoforms that differ by a 6-amino acid insertion at the start of the seventh repeat. Annexin VI has been implicated in mediating the endosome aggregation and vesicle fusion in secreting epithelia during exocytosis. [provided by RefSeq]

Other Designations

annexin VI|annexin VI (p68)|calcium-binding protein p68|calelectrin|calphobindin II

Publication Reference

- [Comparative study of human and mouse postsynaptic proteomes finds high compositional conservation and abundance differences for key synaptic proteins.](#)

Bayes A, Collins MO, Croning MD, van de Lagemaat LN, Choudhary JS, Grant SG.

PLoS One 2012 Oct; 7(10):e4668.

Application: WB-Ti, Human, Mouse, Human brain, Mouse brain

- [Cell surface annexins regulate ADAM-mediated ectodomain shedding of proamphiregulin.](#)

Nakayama H, Fukuda S, Inoue H, Nishida-Fukuda H, Shirakata Y, Hashimoto K, Higashiyama S.

Molecular Biology of the Cell 2012 May; 23(10):1694.

Application: WB-Tr, Human, HT-1080 cells

Disease

- [Femur Head Necrosis](#)
- [Genetic Predisposition to Disease](#)