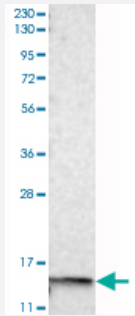


# PIP polyclonal antibody

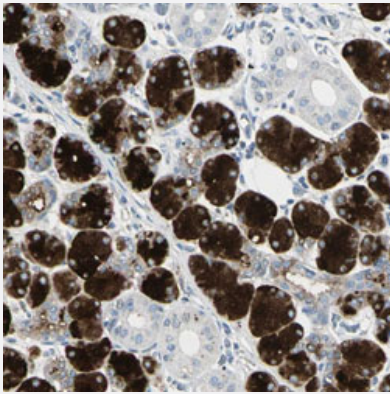
Catalog # PAB31415      Size 100 uL

## Applications



### Western Blot (Cell lysate)

Western Blot analysis of RT-4 cell lysate with PIP polyclonal antibody (Cat # PAB31415).



### Immunohistochemistry (Formalin/PFA-fixed paraffin-embedded sections)

Immunohistochemical staining (Formalin-fixed paraffin-embedded sections) of human salivary gland with PIP polyclonal antibody (Cat # PAB31415) shows strong cytoplasmic and extracellular positivity in glandular cells.

## Specification

Product Description	Rabbit polyclonal antibody raised against partial recombinant human PIP.
Immunogen	Recombinant protein corresponding to human PIP.
Sequence	FDIPKSVRPNDEVTAFLAVQTELKECMVVKTYLISSIPLQGAFNYKYTACLDDNPKTFYWDFYTN RTVQIAAVVDVIRELGICPDAAVPIKNNRFYIEILKVE
Host	Rabbit
Reactivity	Human

Form	Liquid
Purification	Antigen affinity purification
Isotype	IgG
Recommend Usage	Immunohistochemistry (Formalin/PFA-fixed paraffin-embedded sections) (1:200-1:500) Western Blot (1:100-1:250) The optimal working dilution should be determined by the end user.
Storage Buffer	In PBS, pH 7.2 (40% glycerol, 0.02% sodium azide).
Storage Instruction	Store at 4°C. For long term storage store at -20°C. Aliquot to avoid repeated freezing and thawing.
Note	This product contains sodium azide: a POISONOUS AND HAZARDOUS SUBSTANCE which should be handled by trained staff only.

## Applications

- Western Blot (Cell lysate)

Western Blot analysis of RT-4 cell lysate with PIP polyclonal antibody (Cat # PAB31415).

- Immunohistochemistry (Formalin/PFA-fixed paraffin-embedded sections)

Immunohistochemical staining (Formalin-fixed paraffin-embedded sections) of human salivary gland with PIP polyclonal antibody (Cat # PAB31415) shows strong cytoplasmic and extracellular positivity in glandular cells.

## Gene Info — PIP

Entrez GeneID	<a href="#">5304</a>
Protein Accession#	<a href="#">P12273</a>
Gene Name	PIP
Gene Alias	GCDFP-15, GCDFP15, GPIP4
Gene Description	prolactin-induced protein
Omim ID	<a href="#">176720</a>
Gene Ontology	<a href="#">Hyperlink</a>
Other Designations	prolactin-inducible protein

## Disease

- [Genetic Predisposition to Disease](#)
- [Rhinitis](#)