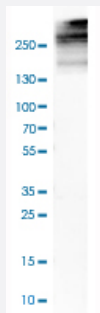


# COL12A1 polyclonal antibody

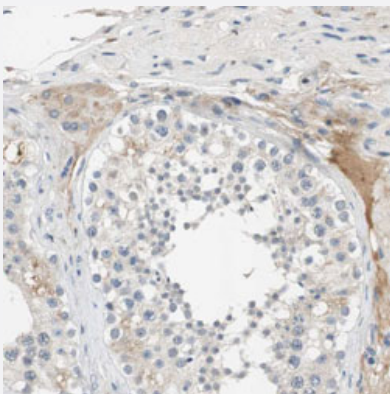
Catalog # PAB31414      Size 100 uL

## Applications



### Western Blot (Cell lysate)

Western Blot analysis of SiHa cell lysate with COL12A1 polyclonal antibody (Cat # PAB31414).



### Immunohistochemistry (Formalin/PFA-fixed paraffin-embedded sections)

Immunohistochemical staining (Formalin-fixed paraffin-embedded sections) of human testis with COL12A1 polyclonal antibody (Cat # PAB31414) shows weak cytoplasmic positivity in Leydig cells and cells in seminiferous ducts.

## Specification

<b>Product Description</b>	Rabbit polyclonal antibody raised against partial recombinant human COL12A1.
<b>Immunogen</b>	Recombinant protein corresponding to human COL12A1.
<b>Sequence</b>	VTPPNQRRRTLENLIPDTKYEVSUIPEYFSGPGTPLTGNAATEEVRGNPRDLRVSDPTTSTMKLS WSGAPGKVKQYLVITYTPVAGGETQEVTVRGDDTNTVLQGLKEGTQYALSVTALYASGAG
<b>Host</b>	Rabbit
<b>Reactivity</b>	Human

Form	Liquid
Purification	Antigen affinity purification
Isotype	IgG
Recommend Usage	Immunohistochemistry (Formalin/PFA-fixed paraffin-embedded sections) (1:20-1:50) Western Blot (1:100-1:250) The optimal working dilution should be determined by the end user.
Storage Buffer	In PBS, pH 7.2 (40% glycerol, 0.02% sodium azide).
Storage Instruction	Store at 4°C. For long term storage store at -20°C. Aliquot to avoid repeated freezing and thawing.
Note	This product contains sodium azide: a POISONOUS AND HAZARDOUS SUBSTANCE which should be handled by trained staff only.

## Applications

- Western Blot (Cell lysate)

Western Blot analysis of SiHa cell lysate with COL12A1 polyclonal antibody (Cat # PAB31414).

- Immunohistochemistry (Formalin/PFA-fixed paraffin-embedded sections)

Immunohistochemical staining (Formalin-fixed paraffin-embedded sections) of human testis with COL12A1 polyclonal antibody (Cat # PAB31414) shows weak cytoplasmic positivity in Leydig cells and cells in seminiferous ducts.

## Gene Info — COL12A1

Entrez GeneID	<a href="#">1303</a>
Protein Accession#	<a href="#">Q99715</a>
Gene Name	COL12A1
Gene Alias	BA209D8.1, COL12A1L, DJ234P15.1
Gene Description	collagen, type XII, alpha 1
Omim ID	<a href="#">120320</a>
Gene Ontology	<a href="#">Hyperlink</a>

**Gene Summary**

This gene encodes the alpha chain of type XII collagen, a member of the FACIT (fibril-associated collagens with interrupted triple helices) collagen family. Type XII collagen is a homotrimer found in association with type I collagen, an association that is thought to modify the interactions between collagen I fibrils and the surrounding matrix. Alternatively spliced transcript variants encoding different isoforms have been identified. [provided by RefSeq]

**Other Designations**

OTTHUMP00000016752|collagen type XII proteoglycan|collagen, type XII, alpha 1-like

**Disease**

- [Adenocarcinoma](#)
- [Esophageal Neoplasms](#)
- [Rupture](#)