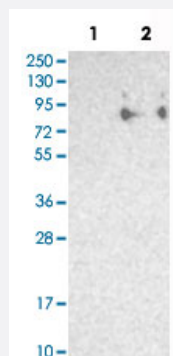


SIGLEC5 polyclonal antibody

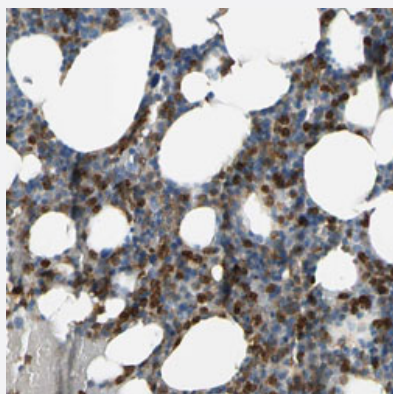
Catalog # PAB31413 Size 100 uL

Applications



Western Blot (Transfected lysate)

Western Blot analysis of Lane 1: negative control (vector only transfected HEK293T cell lysate) and Lane 2: over-expression lysate (co-expressed with a C-terminal myc-DDK tag in mammalian HEK293T cells) with SIGLEC5 polyclonal antibody (Cat # PAB31413).



Immunohistochemistry (Formalin/PFA-fixed paraffin-embedded sections)

Immunohistochemical staining (Formalin-fixed paraffin-embedded sections) of human bone marrow with SIGLEC5 polyclonal antibody (Cat # PAB31413) shows strong cytoplasmic positivity in subsets of bone marrow poietic cells.

Specification

Product Description	Rabbit polyclonal antibody raised against partial recombinant human SIGLEC5.
Immunogen	Recombinant protein corresponding to human SIGLEC5.
Sequence	KARRKQAAGRPEKMDDDPIMGTITSGSRKKPWPDSAGDQASPPGDAPPLEEQKELHYASLSF SEMKSREPKDQEAPSTTEYSEIKTSK
Host	Rabbit
Reactivity	Human

Form	Liquid
Purification	Antigen affinity purification
Isotype	IgG
Recommend Usage	Immunohistochemistry (Formalin/PFA-fixed paraffin-embedded sections) (1:20-1:50) Western Blot (1:100-1:250) The optimal working dilution should be determined by the end user.
Storage Buffer	In PBS, pH 7.2 (40% glycerol, 0.02% sodium azide).
Storage Instruction	Store at 4°C. For long term storage store at -20°C. Aliquot to avoid repeated freezing and thawing.
Note	This product contains sodium azide: a POISONOUS AND HAZARDOUS SUBSTANCE which should be handled by trained staff only.

Applications

- Western Blot (Transfected lysate)

Western Blot analysis of Lane 1: negative control (vector only transfected HEK293T cell lysate) and Lane 2: over-expression lysate (co-expressed with a C-terminal myc-DDK tag in mammalian HEK293T cells) with SIGLEC5 polyclonal antibody (Cat # PAB31413).

- Immunohistochemistry (Formalin/PFA-fixed paraffin-embedded sections)

Immunohistochemical staining (Formalin-fixed paraffin-embedded sections) of human bone marrow with SIGLEC5 polyclonal antibody (Cat # PAB31413) shows strong cytoplasmic positivity in subsets of bone marrow poietic cells.

Gene Info — SIGLEC5

Entrez GeneID	8778
Protein Accession#	O15389
Gene Name	SIGLEC5
Gene Alias	CD170, CD33L2, OB-BP2, OBBP2, SIGLEC-5
Gene Description	sialic acid binding Ig-like lectin 5
Omim ID	604200
Gene Ontology	Hyperlink

Gene Summary

The sialic acid-binding immunoglobulin-like lectins (SIGLECs), such as SIGLEC5, are a subgroup of the immunoglobulin (Ig) superfamily that mediate protein-carbohydrate interactions. They specifically interact with sialic acids in glycoproteins and glycolipids, with each SIGLEC having a particular preference for both the nature of the sialic acid and its glycosidic linkage to adjacent sugars. SIGLECs have similar structures, including extracellular Ig-like domains composed of an N-terminal V-set domain followed by varying numbers of C2-set domains. It appears that all SIGLECs have an unusual arrangement of conserved cysteine residues in the V-set and adjacent C2-set domains. Most SIGLECs are expressed uniquely within the hematopoietic system (Cornish et al., 1998 [PubMed 9731071]).[supplied by OMIM]

Other Designations

CD33 antigen-like 2|OB binding protein-2|sialic acid-binding immunoglobulin-like lectin 5